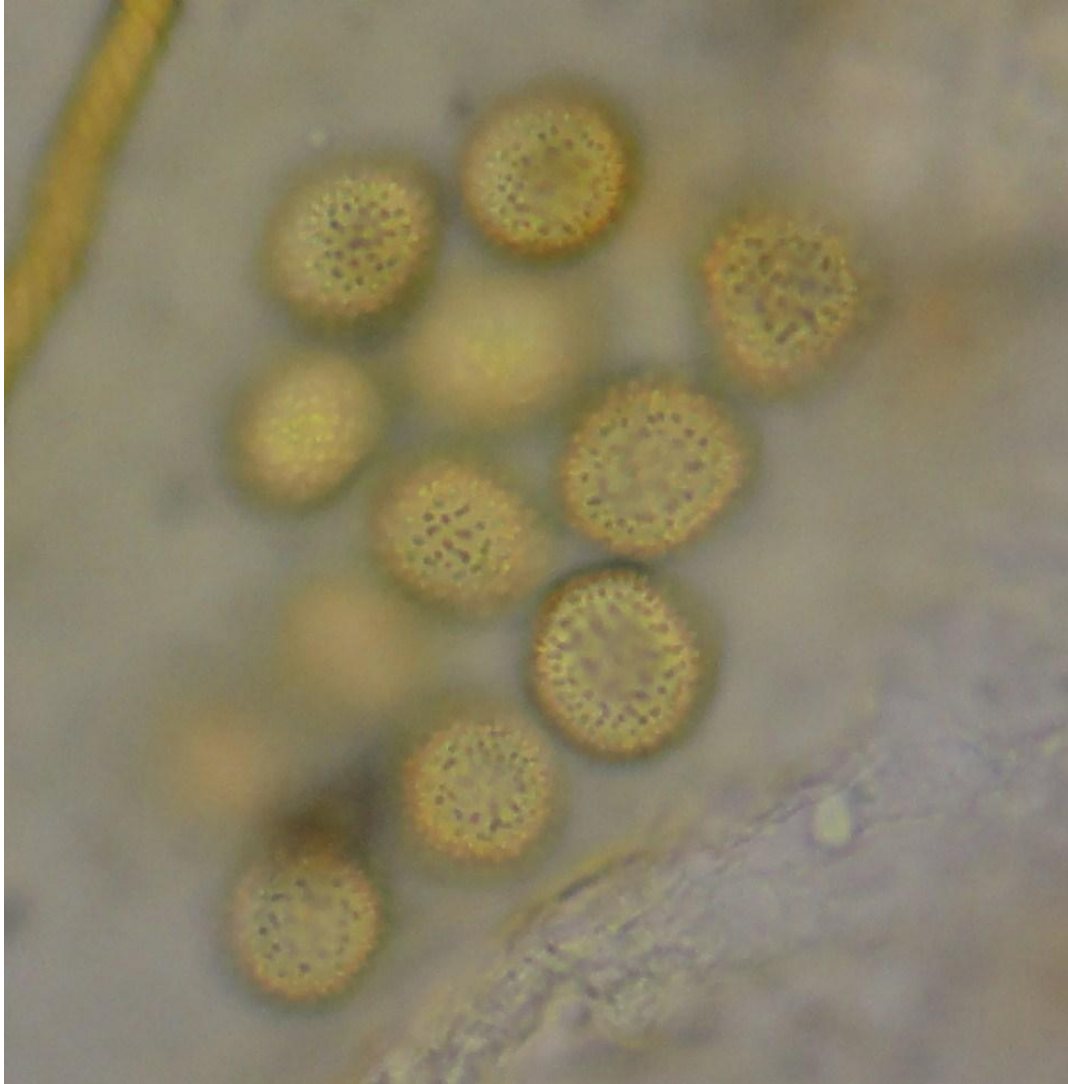


Trichia lutescens (Lister) Lister

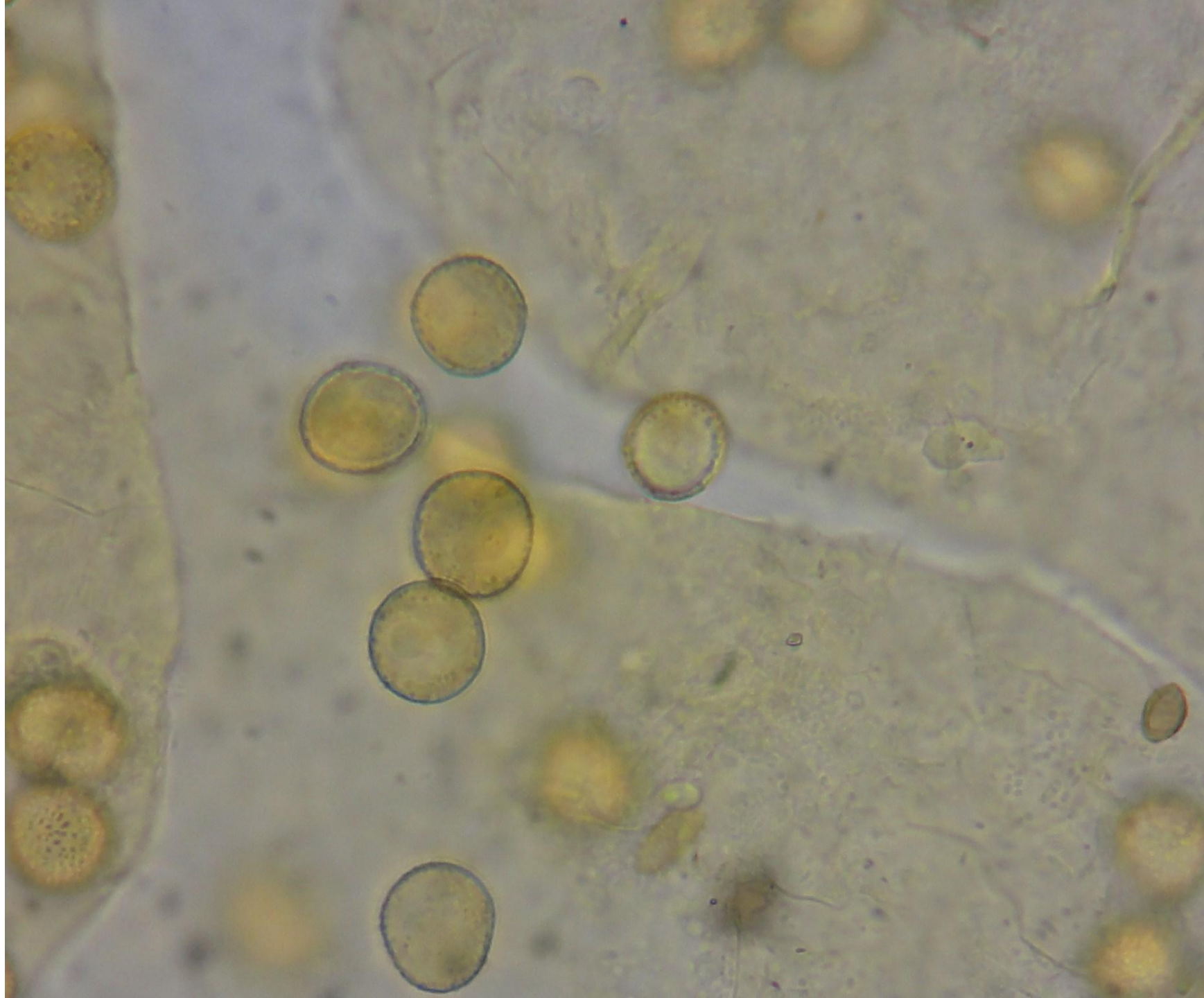


Le 15 mai 2011, Bellino (IT). Alt. 2135m – Sur bois, esseulé, péridium d'apparence simple (ou double mal formé ?), extrémités des élatères courtes, bandes spiralées à gauche, spores 10-13 (14) μm .

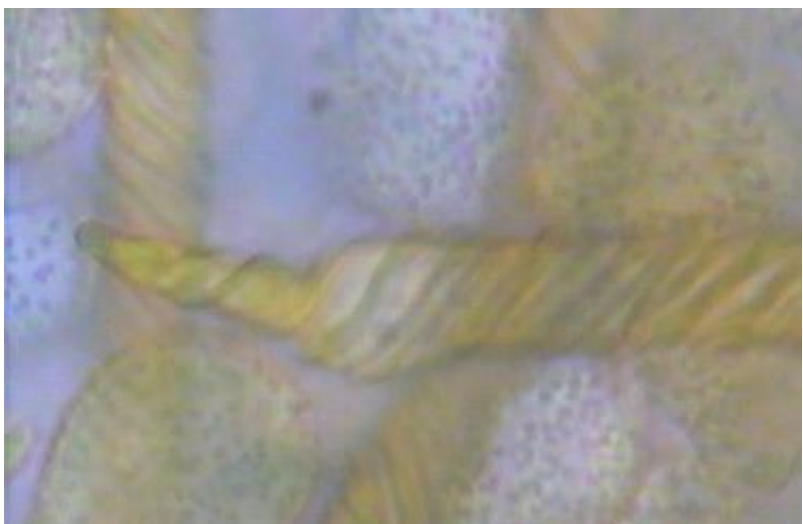


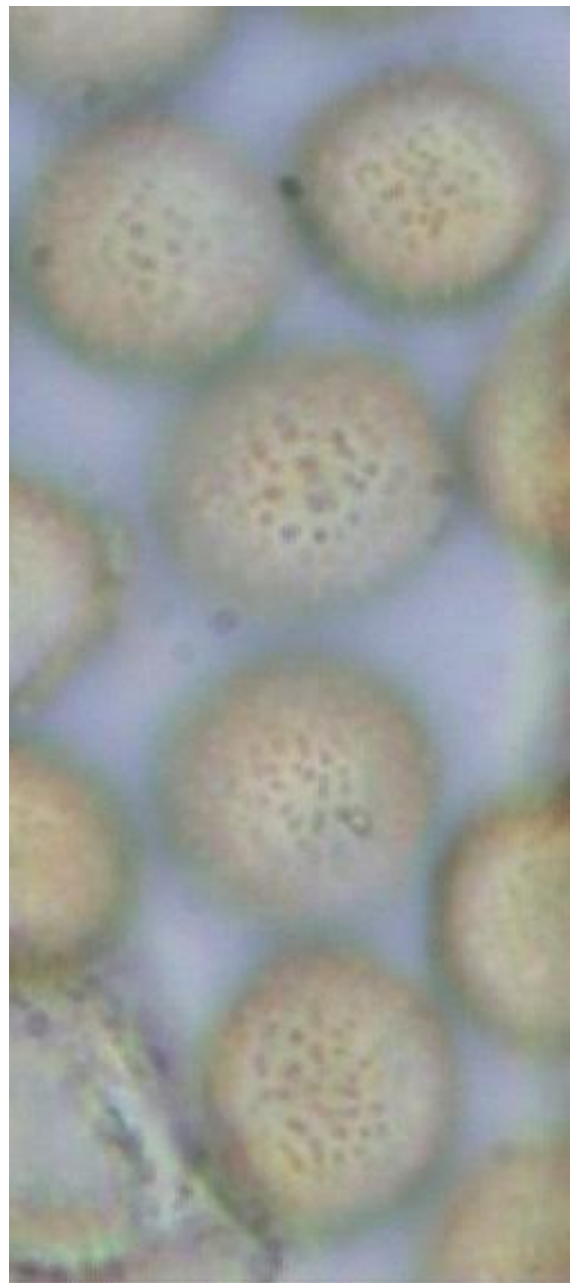
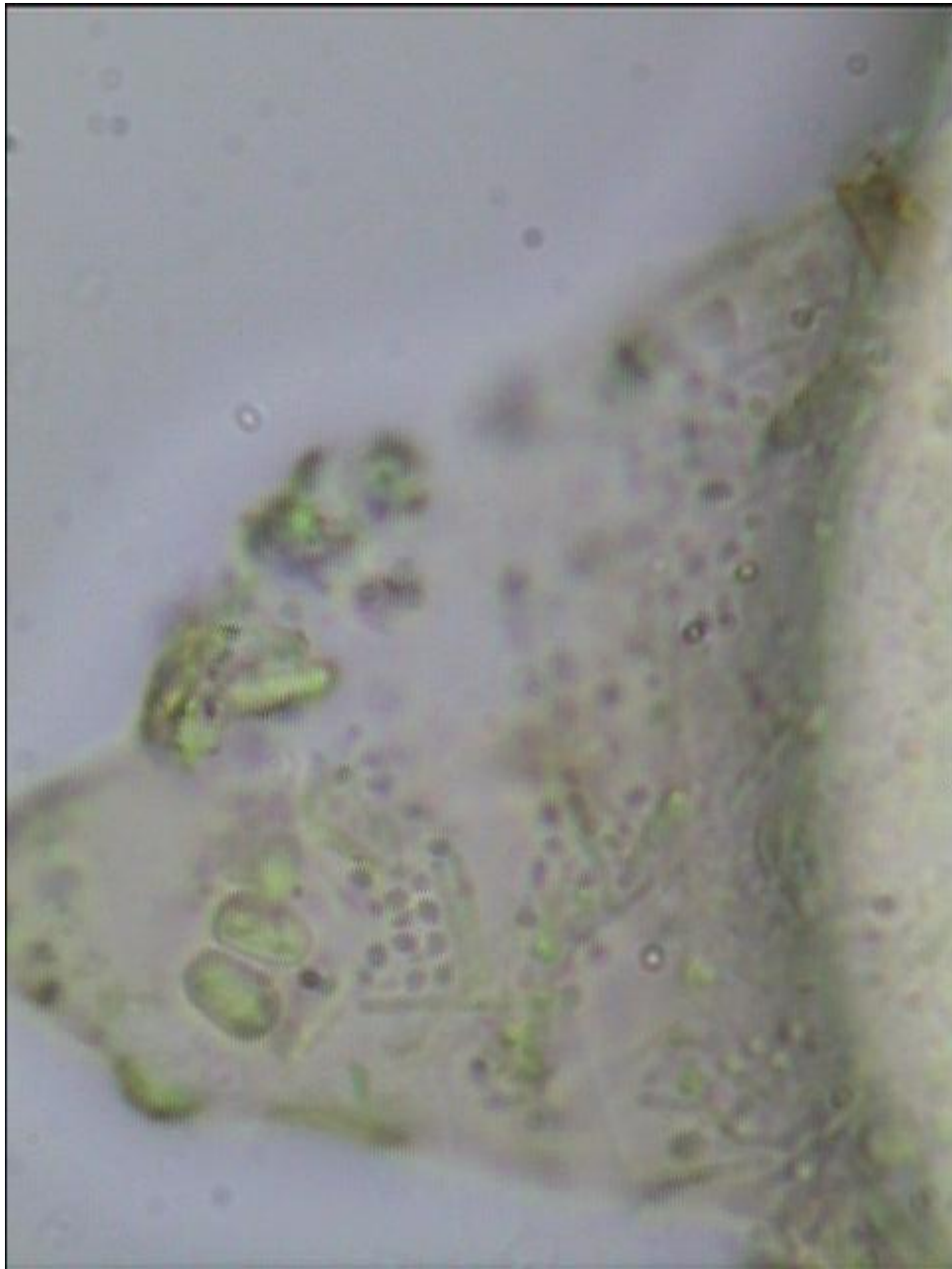


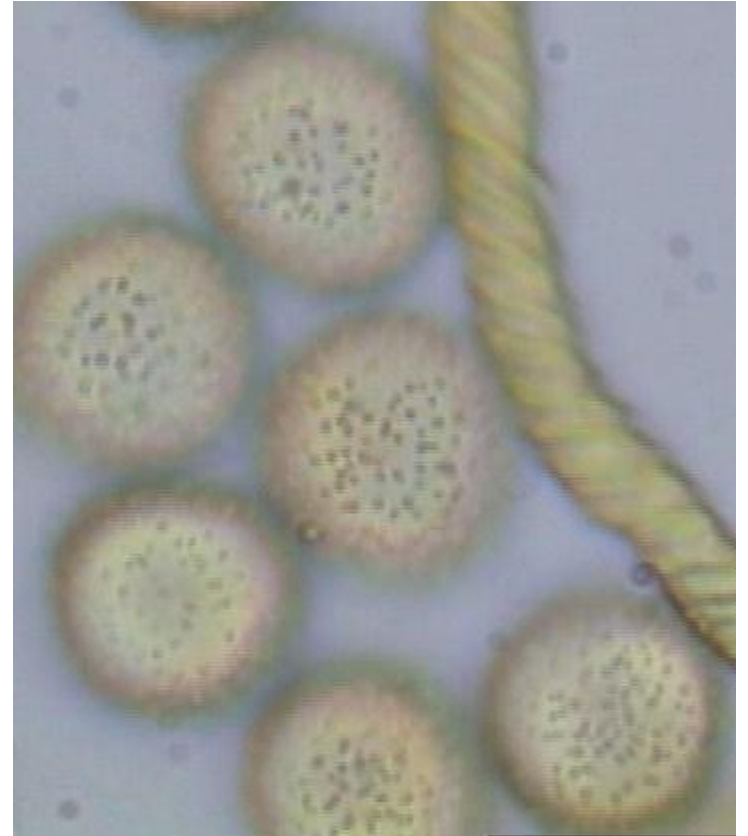
Spores 10-13 (14) μm



Diam. Des élatères 4-5 μm







Bandes spiralées à gauche (la spirale part de la droite vers la gauche)

