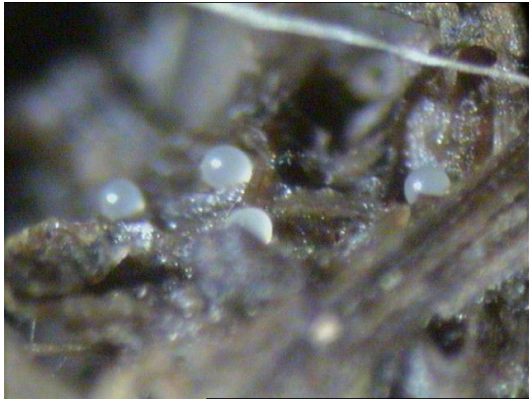


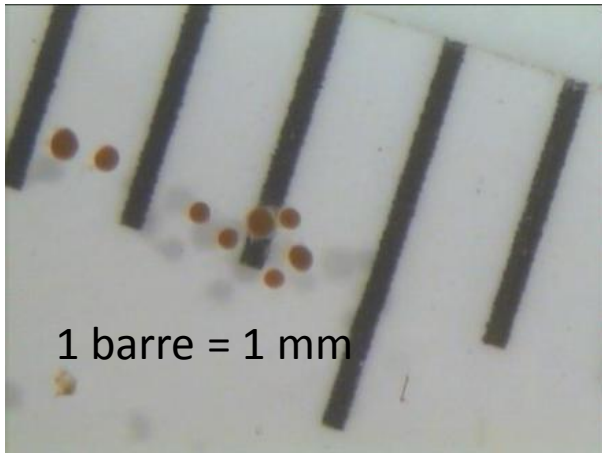
Perichaena liceoides ou *P. luteola* ?

Sur crottin, récolté le 05/05/09 et mis en MC le 17/05/09, premières observations le 02/07/09 - Casterino, Mercantour N44,0936° - E7,5109° (Dans la litt. contractions entre les auteurs)





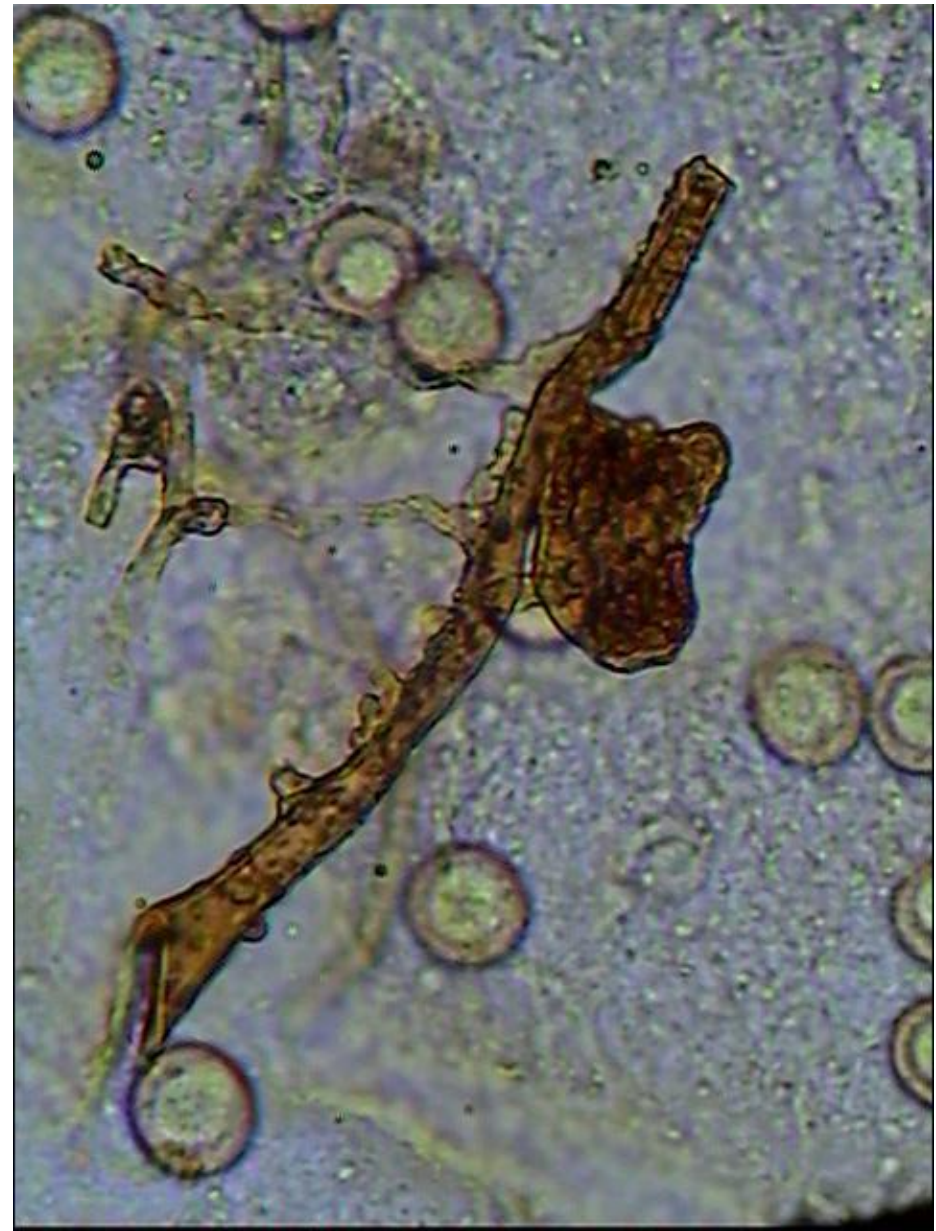
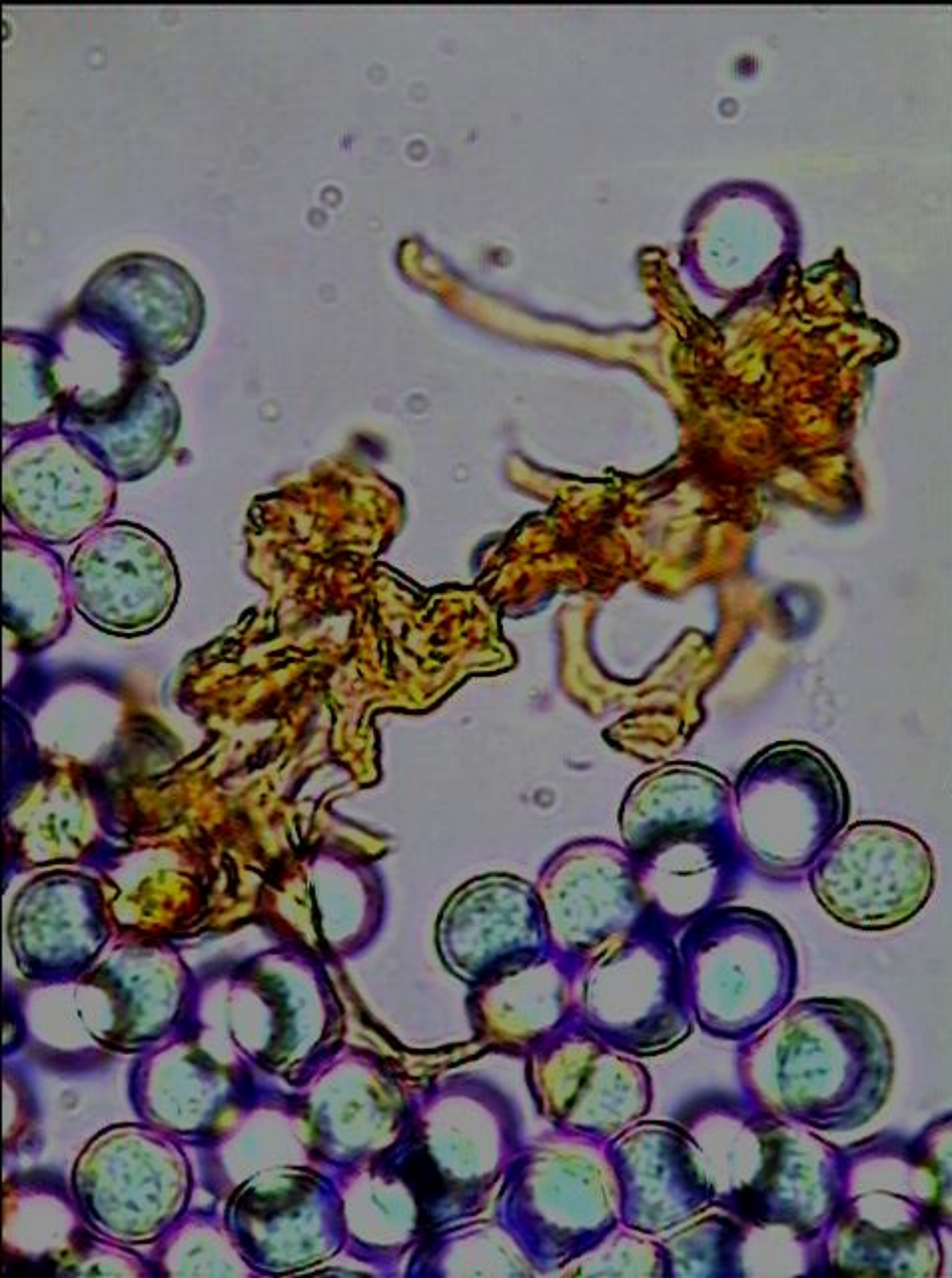
Hypothalle absent ou alors très fin et transparent le rendant indécélable



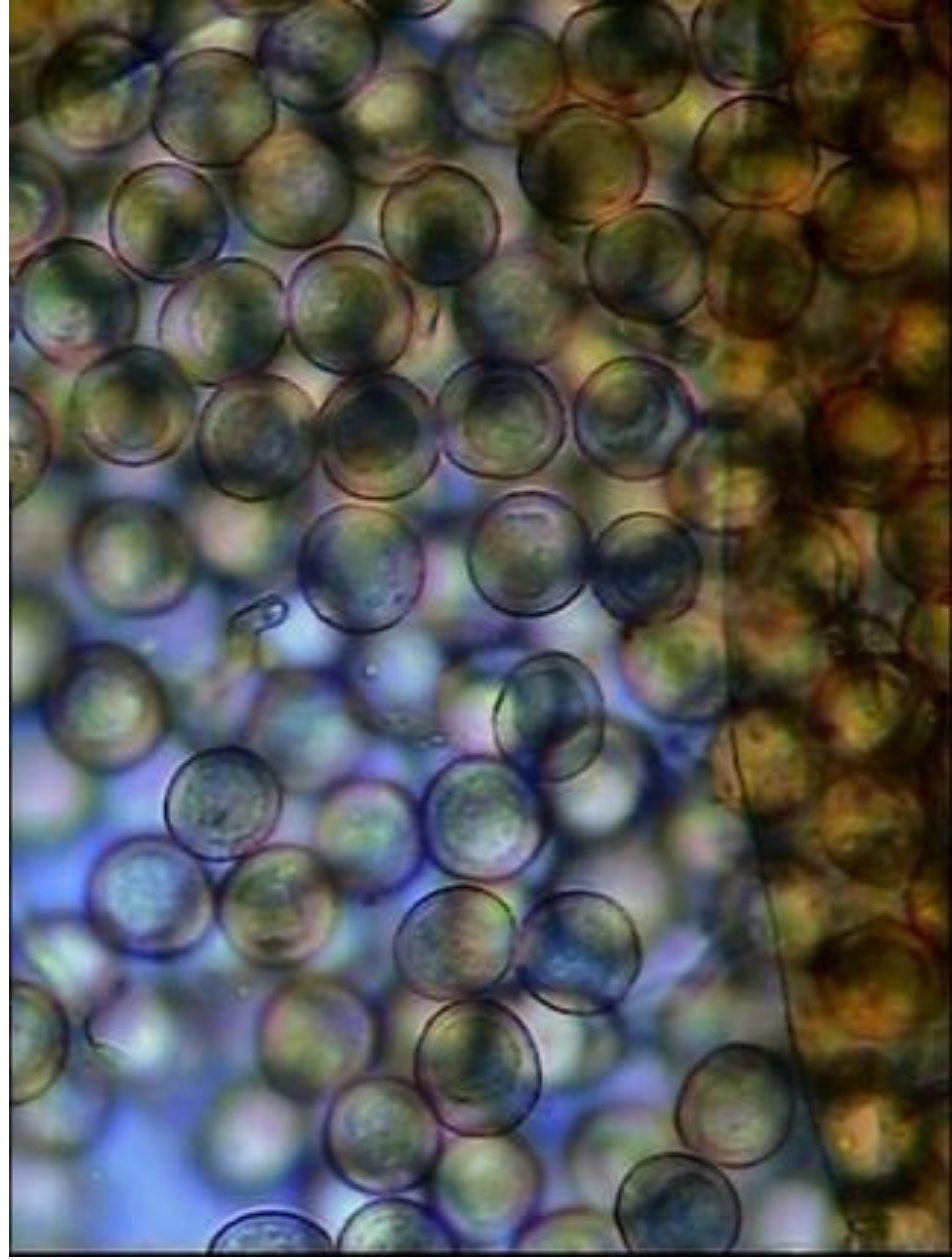
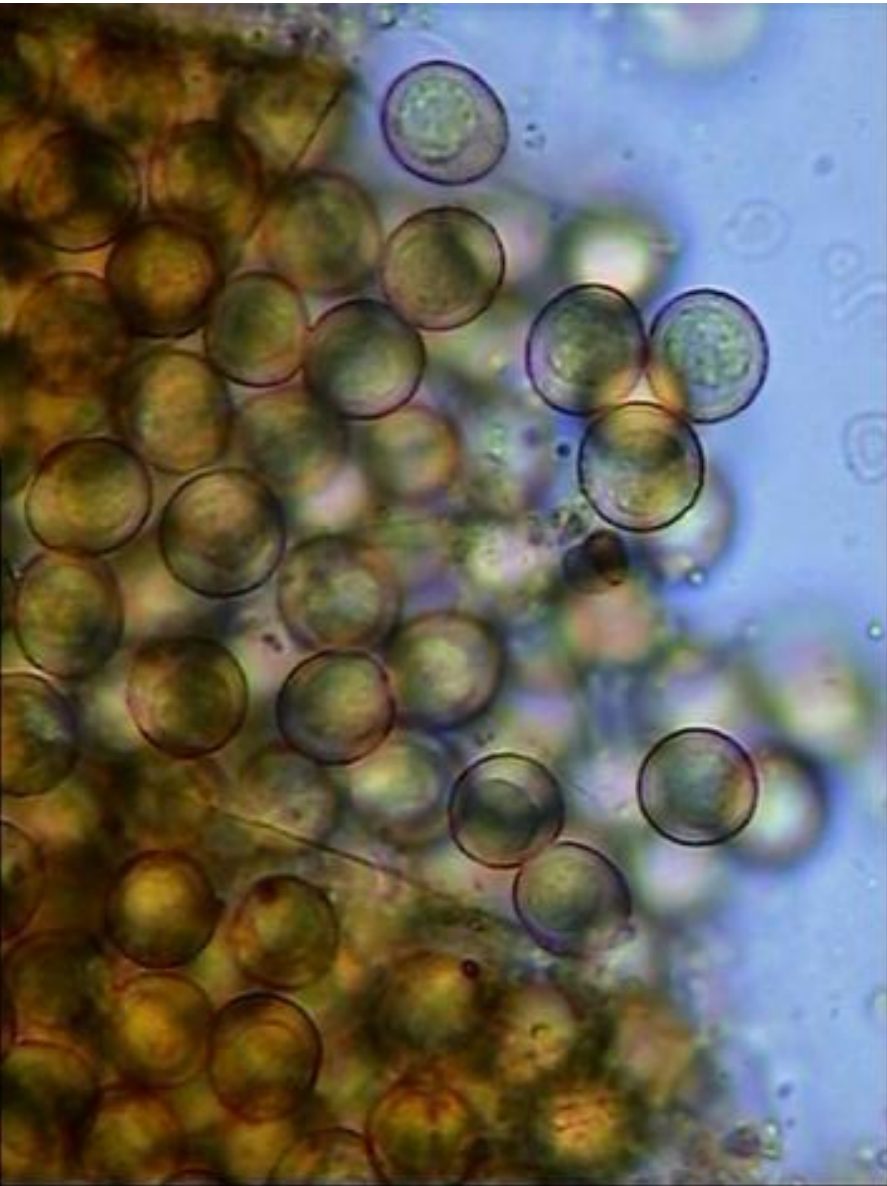


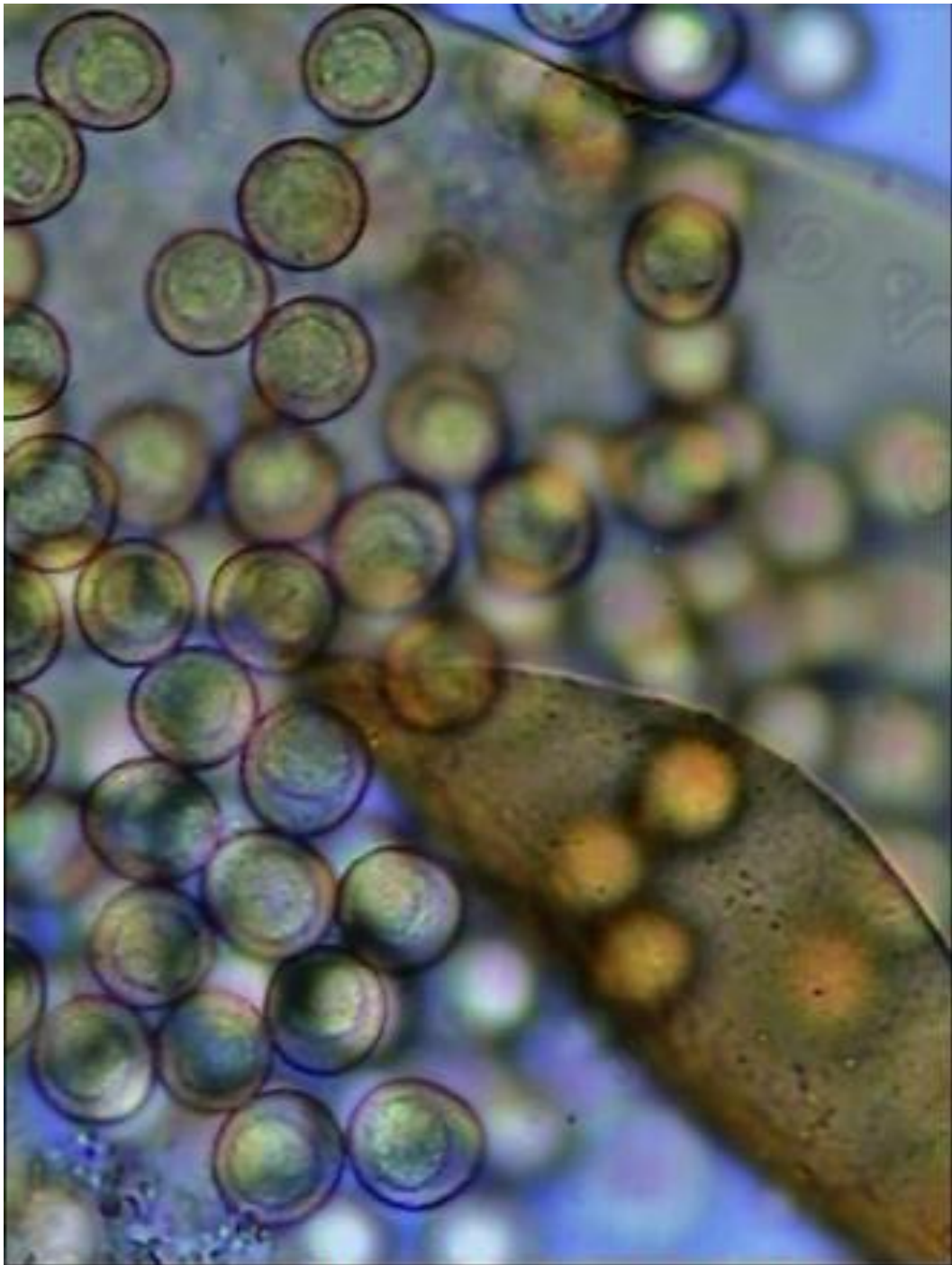
Capillitium peu abondant à parfois presque manquant ...

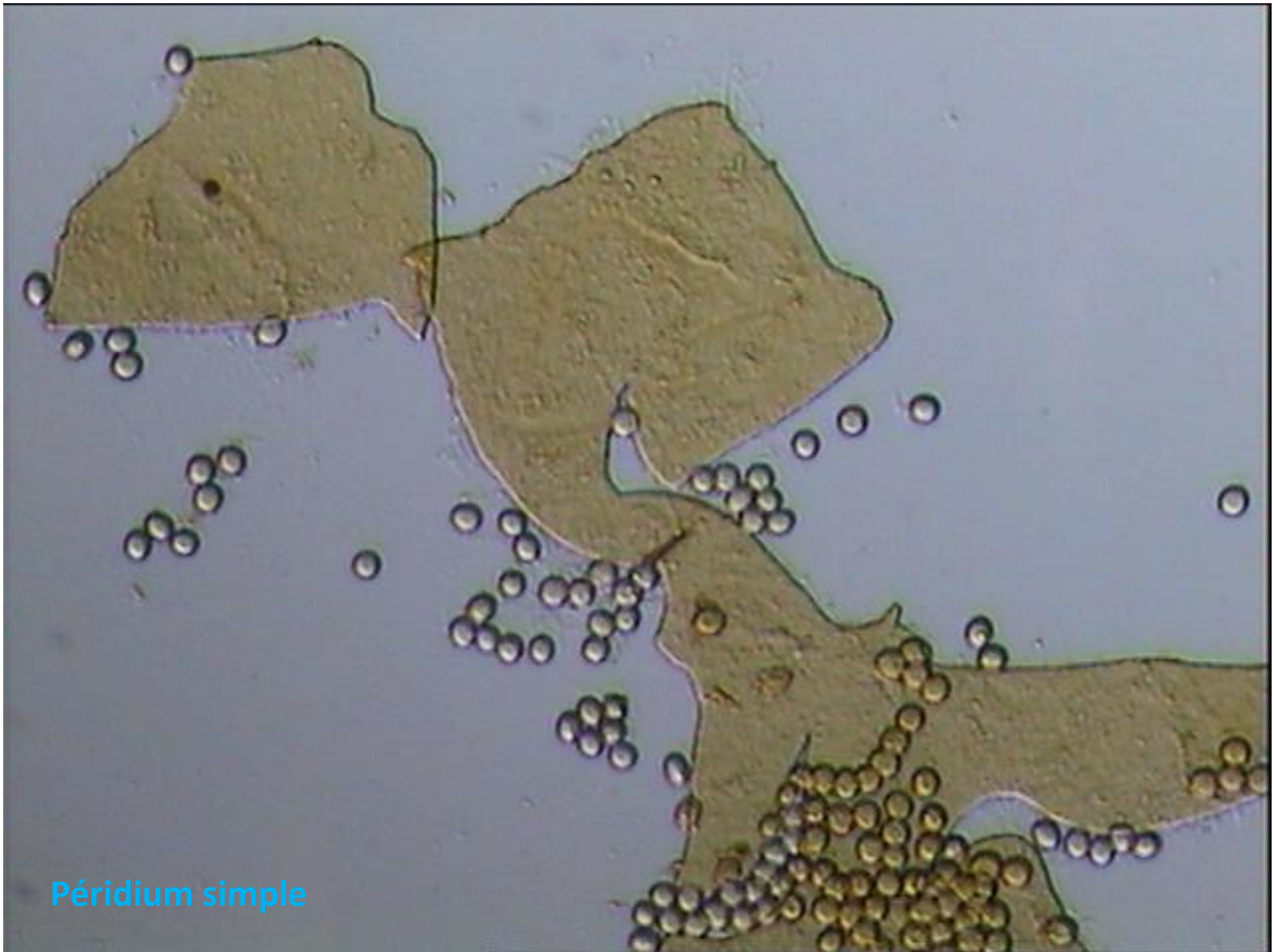




Spores 11-13 μm , finement verruqueuses







Péridium simple