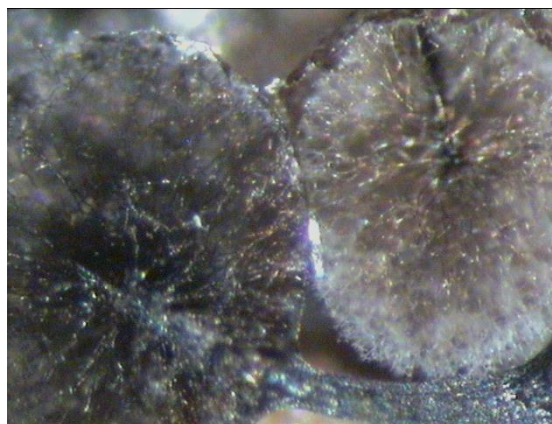
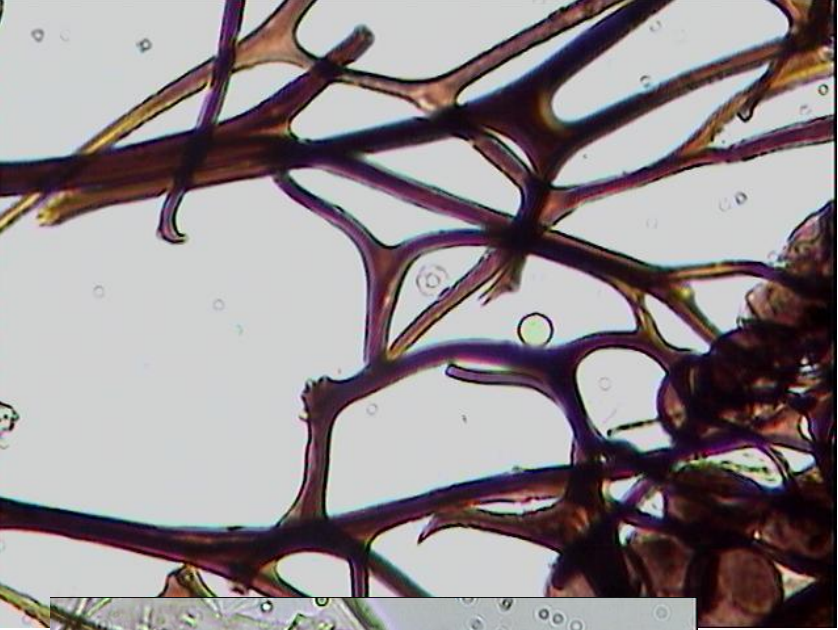


# ***Lamproderma maculatum* et *pseudomaculatum***

(*L. maculatum*, herbier Meyer 1153 et *L. pseudomaculatum*, herbier Meyer 37354)

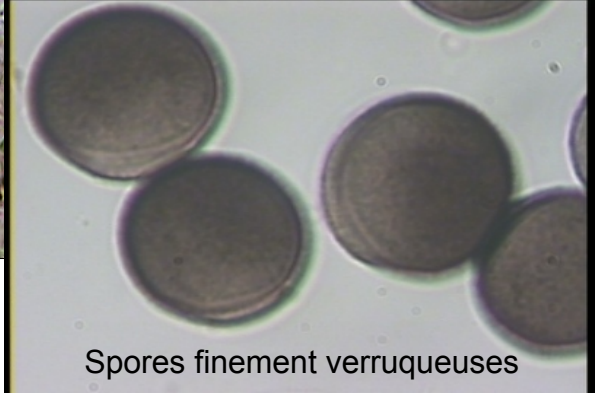




*L. maculatum*



*L. pseudomaculatum*



Spores finement verruqueuses



Spores verruqueuses et subspinuleuses



\* *L. echinosporum* a des spores plus claires et échinulées