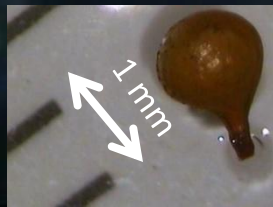


## ***Hemitrichia clavata* (Pers) Rostaf**

Inventaire GTBW – Hamme-Mille (BE), le 4 octobre 2009, sur tronc de *Fagus* couché au sol.





Capillitium 5-6  $\mu\text{m}$  de diam.

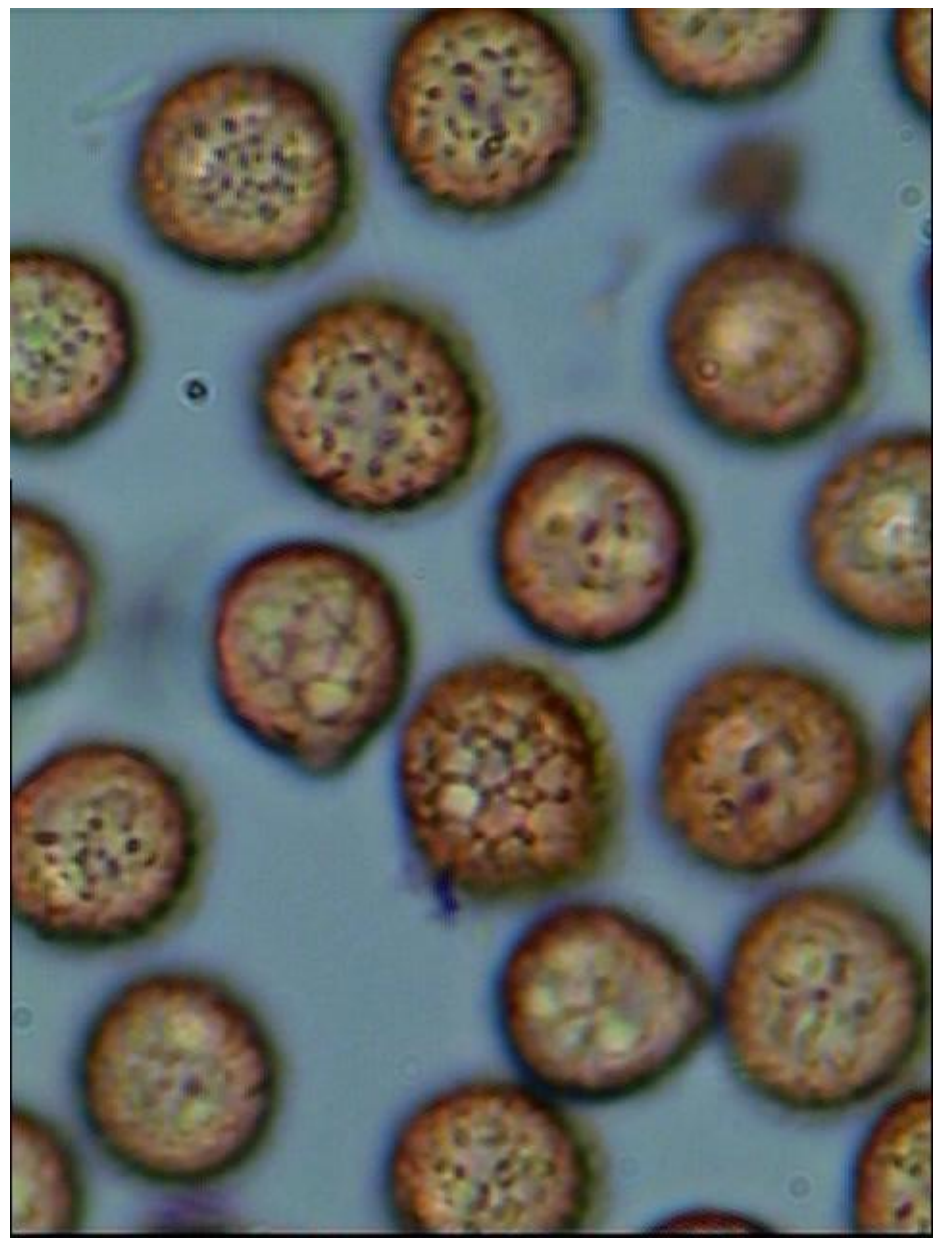






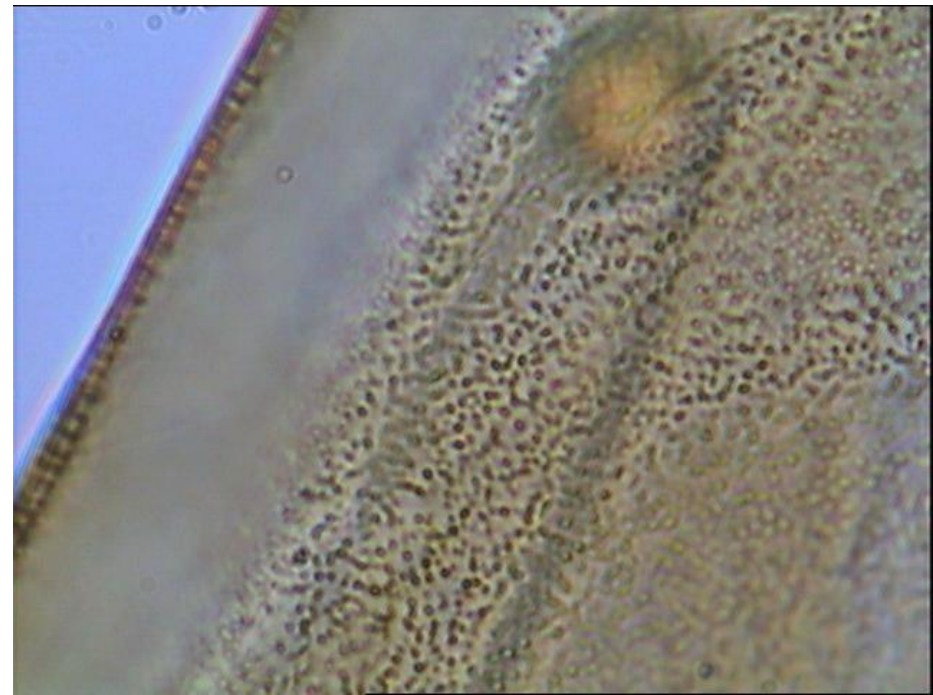
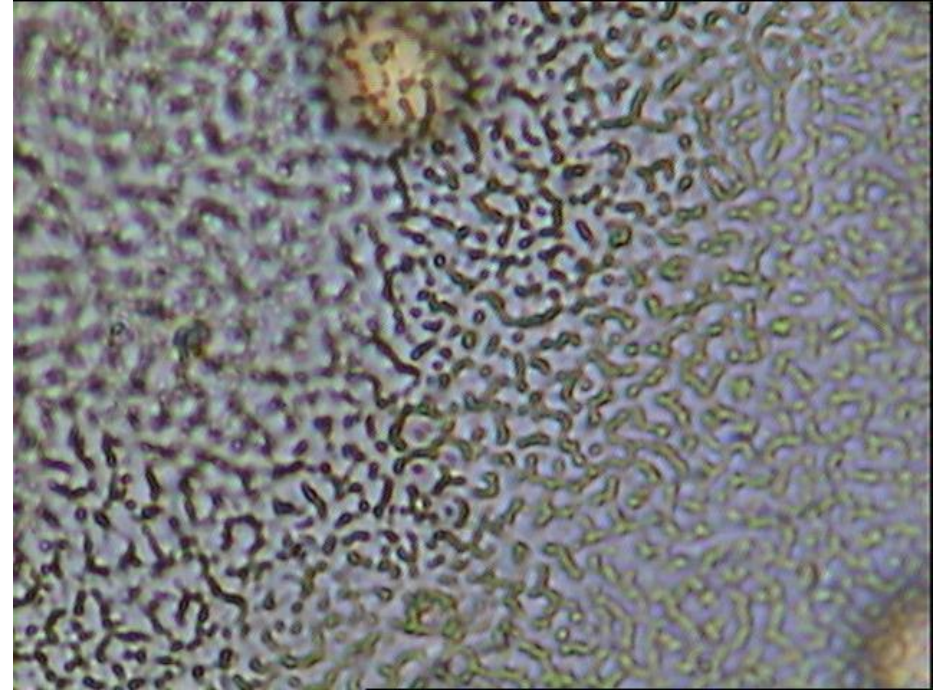




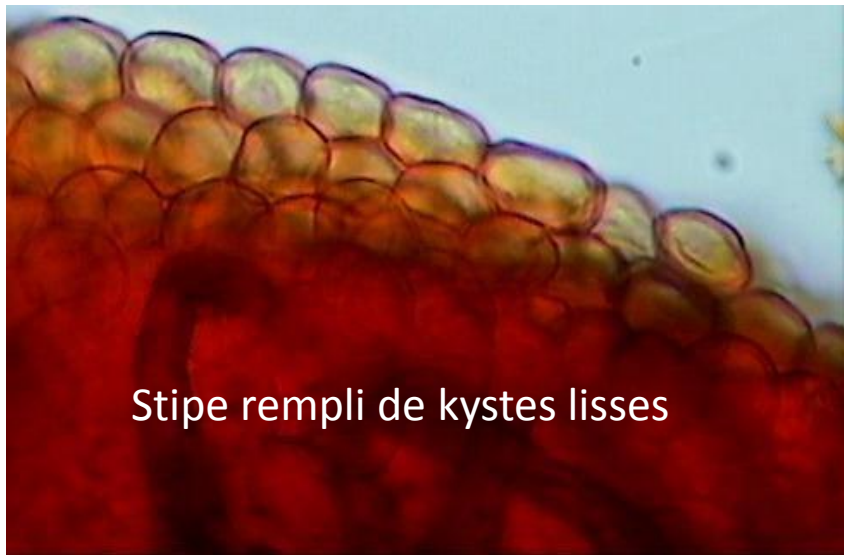




Péridium







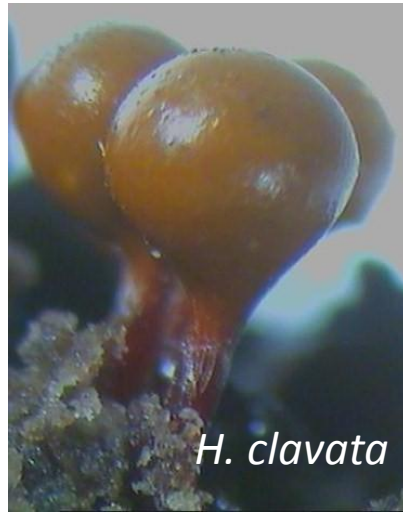
Stipe rempli de kystes lisses



Capillitium du stipe à sa base

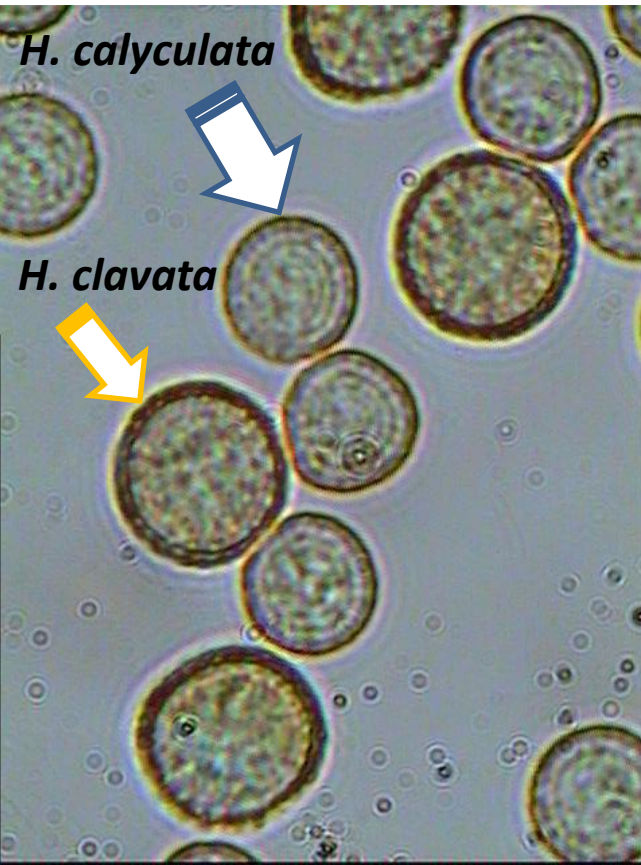


*H. calyculata*

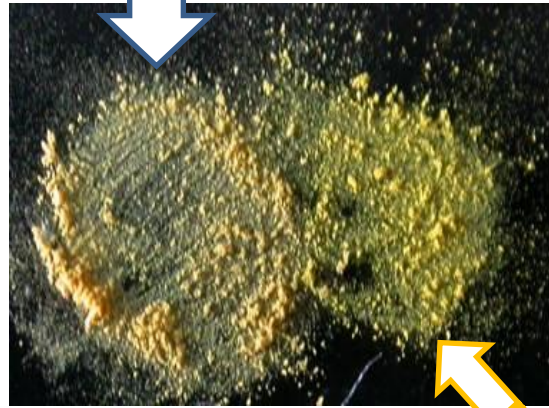


*H. clavata*

*Hemitrichia clavata* est une espèce proche de *H. calyculata*. La forme du sporocyste, la couleur de la sporée, la dim. des spores et la bordure des spores (presque imperceptible chez *H. calyculata*) sont, entre autres, différentes.



*H. calyculata*



*H. clavata*



*H. calyculata*

*H. clavata*