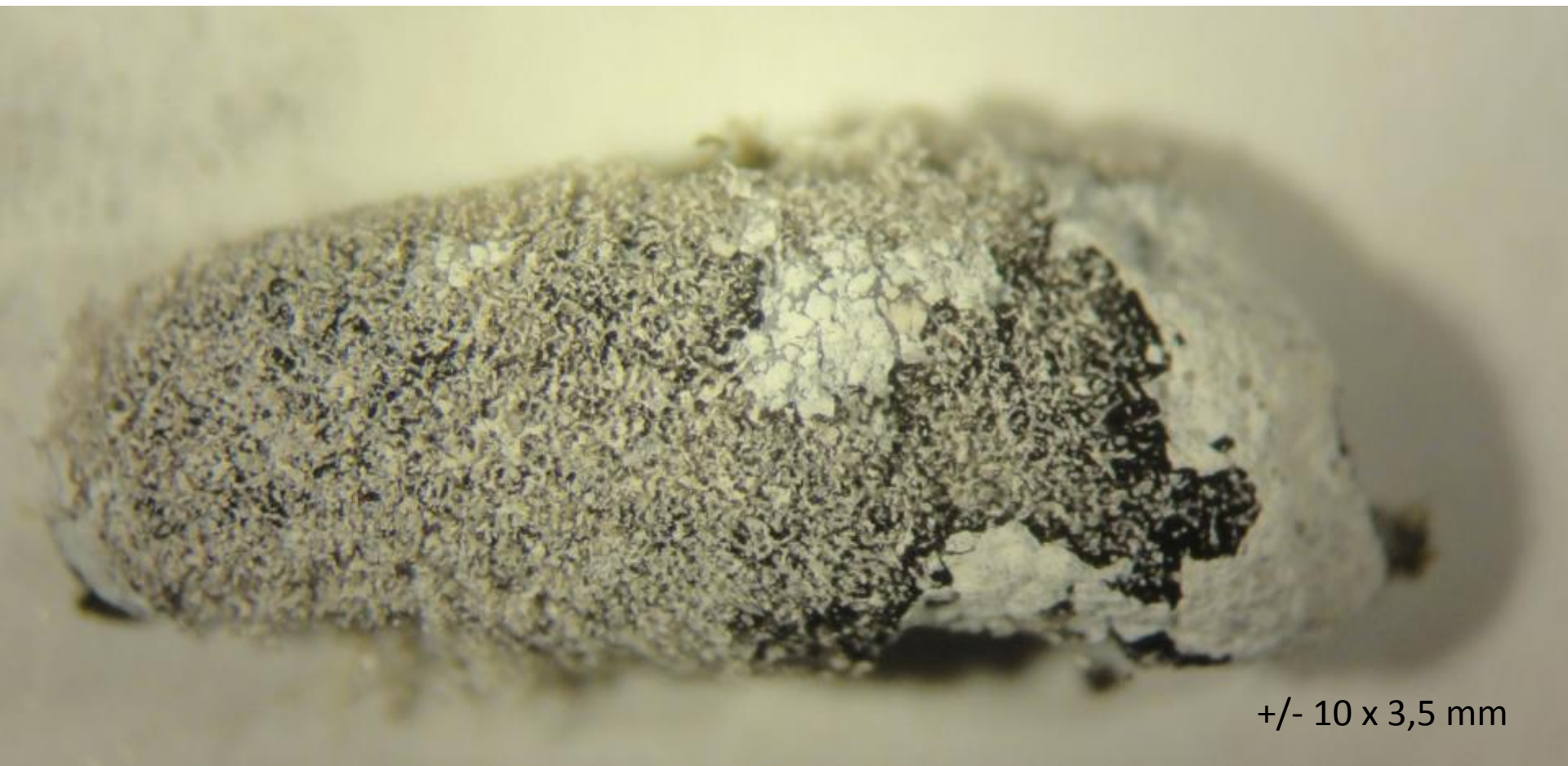


***Fuligo cinerea* (Schwein) Morgan**

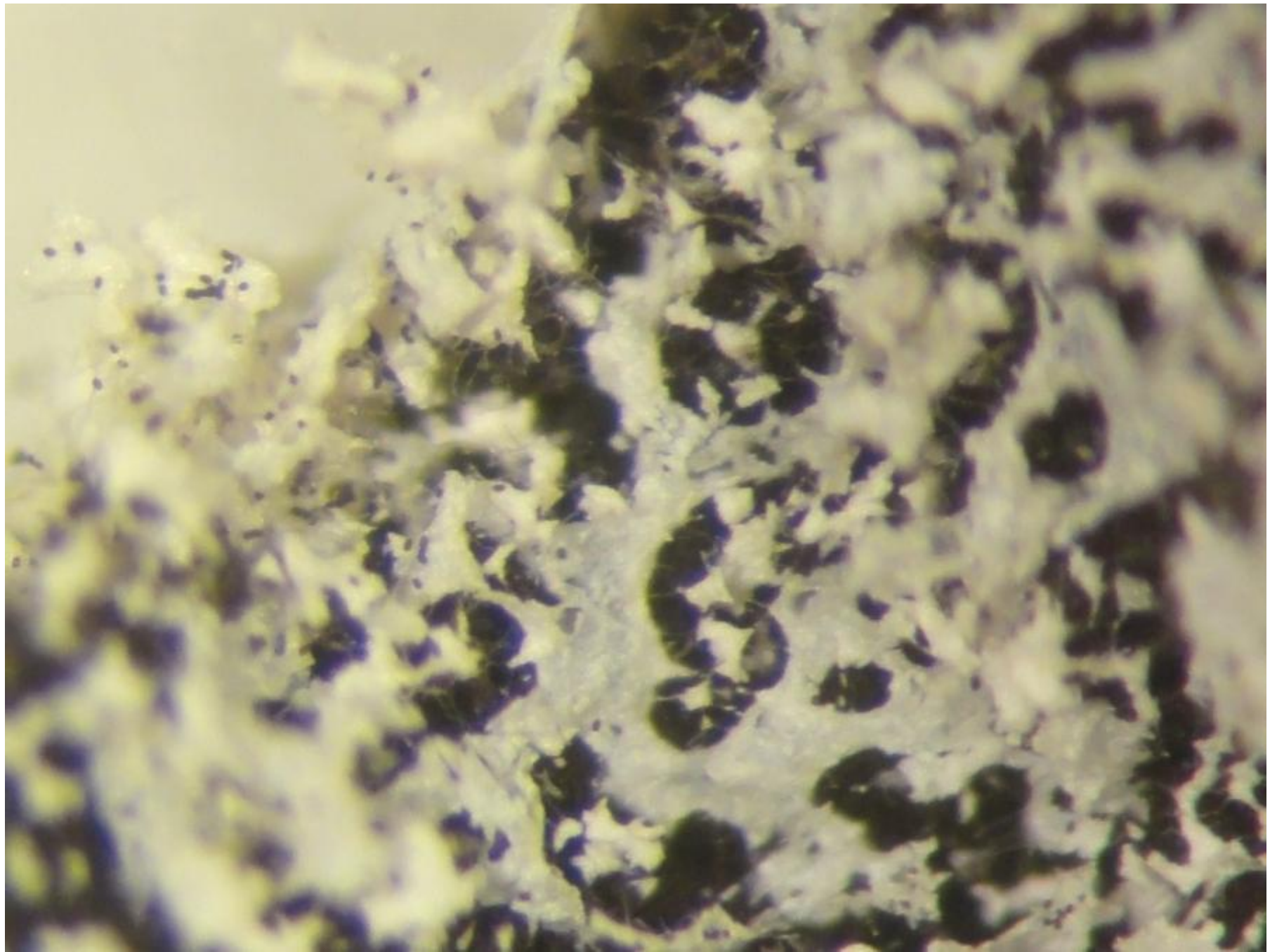
Saint-Paul-sur-Isère (FR73), 10/08/2011, alt. 403m, sur tontes de gazon . M. Meyer 38844 - Spores : 14-15 x 11-12 μm

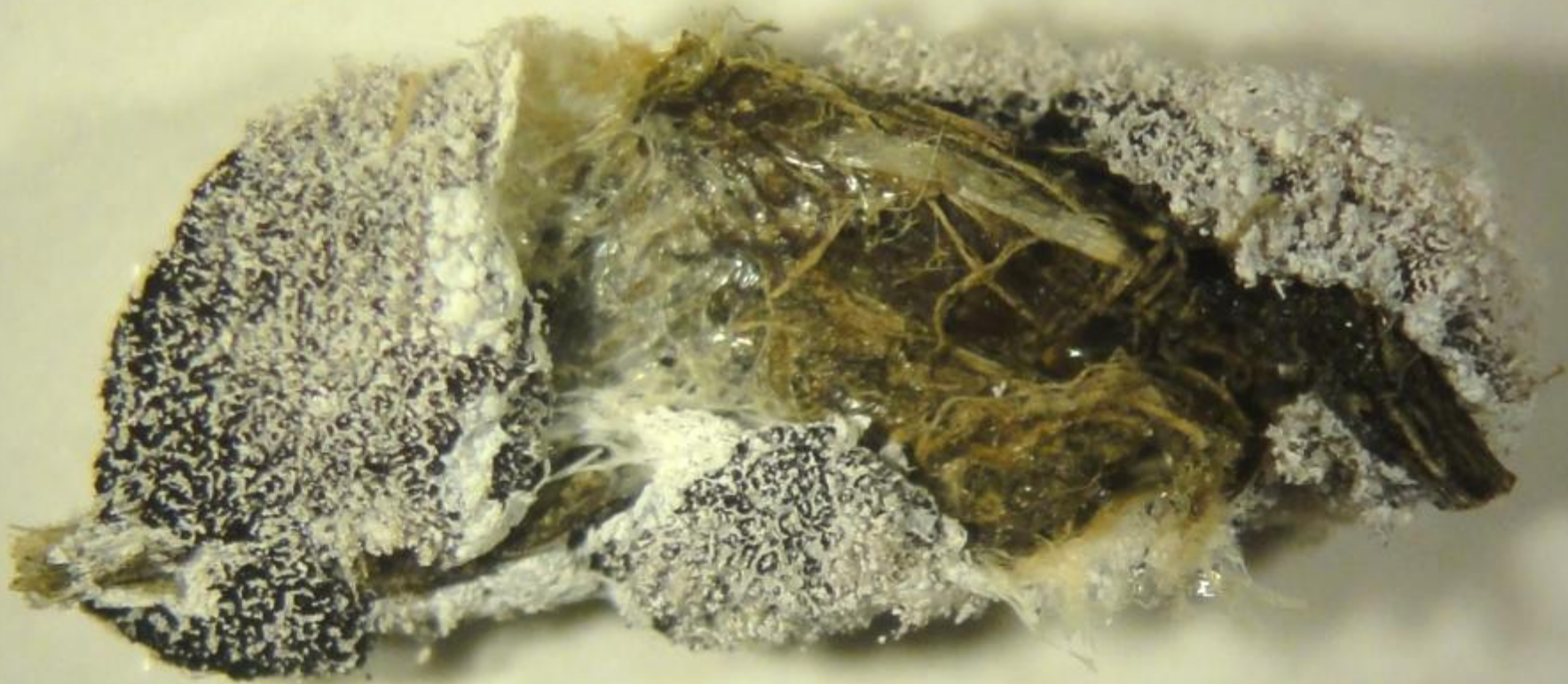


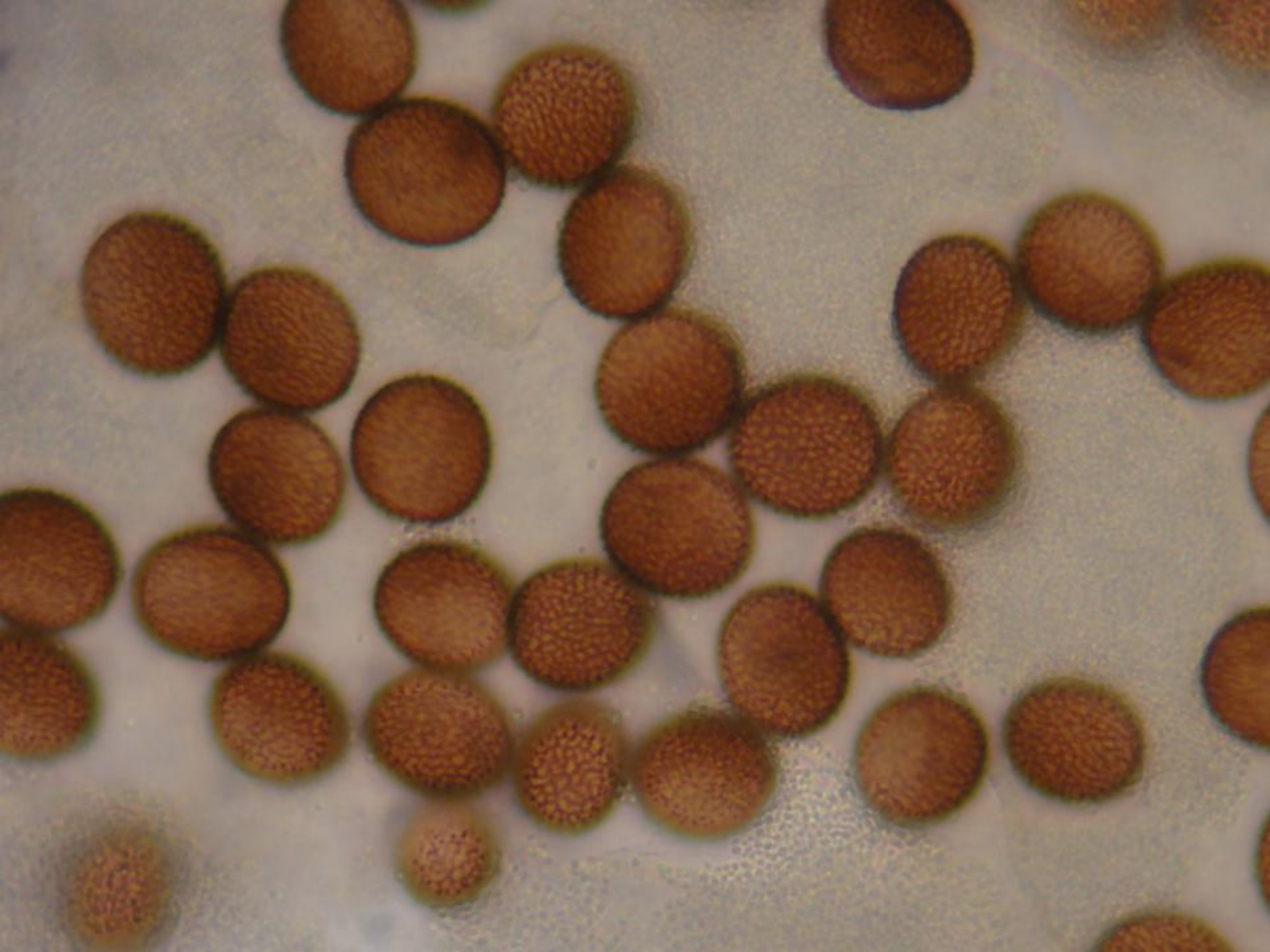


+/- 10 x 3,5 mm

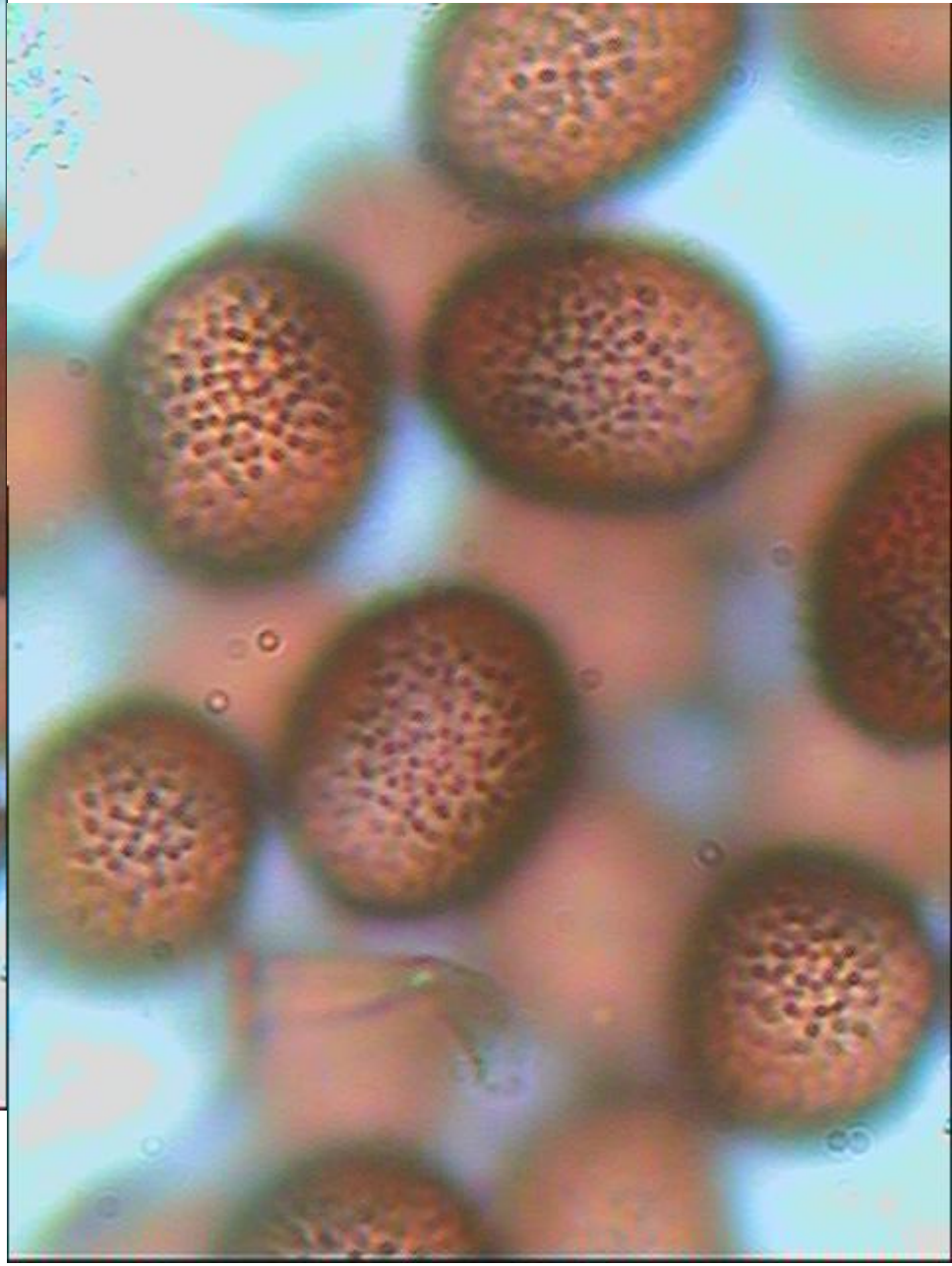
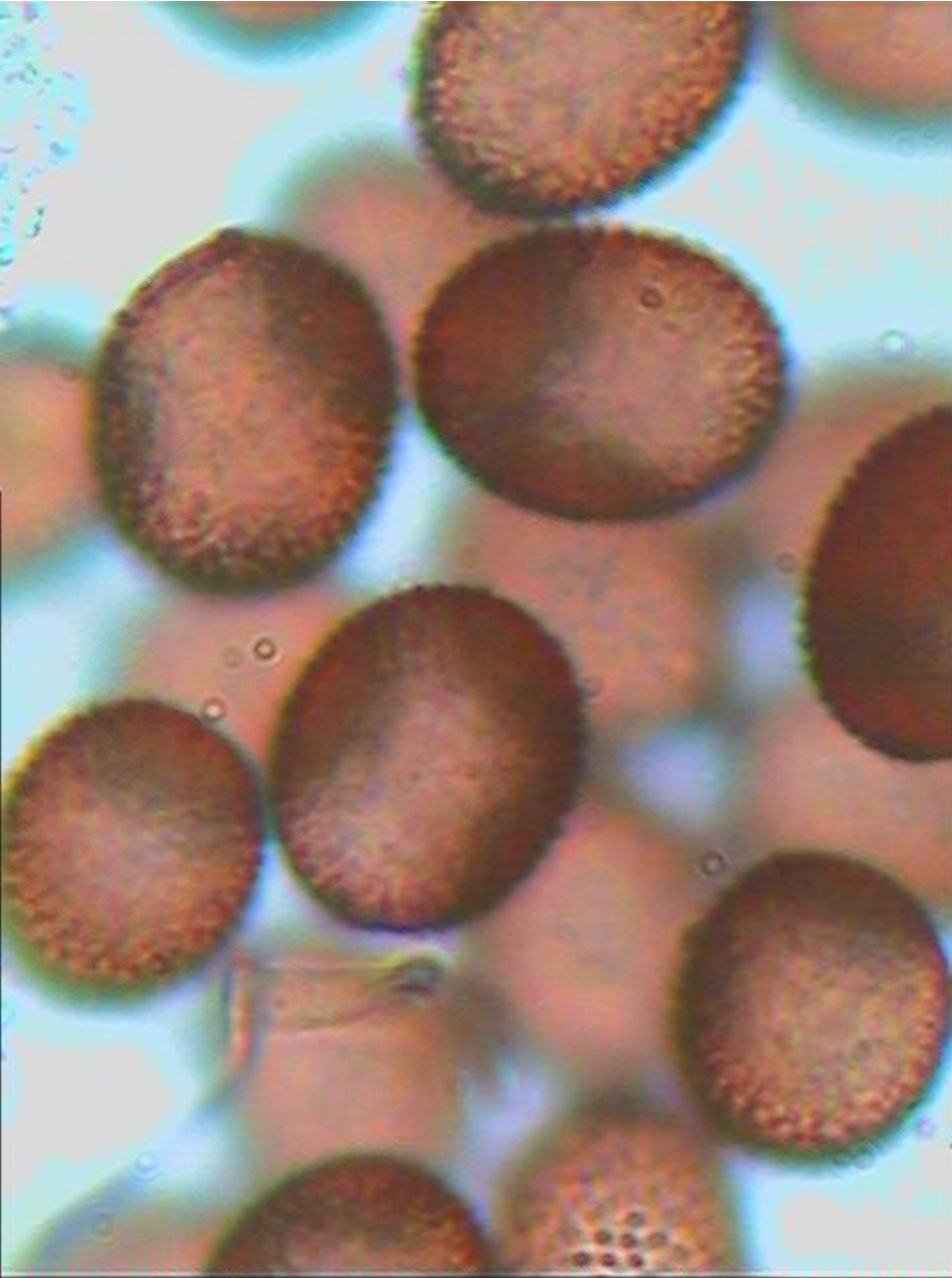


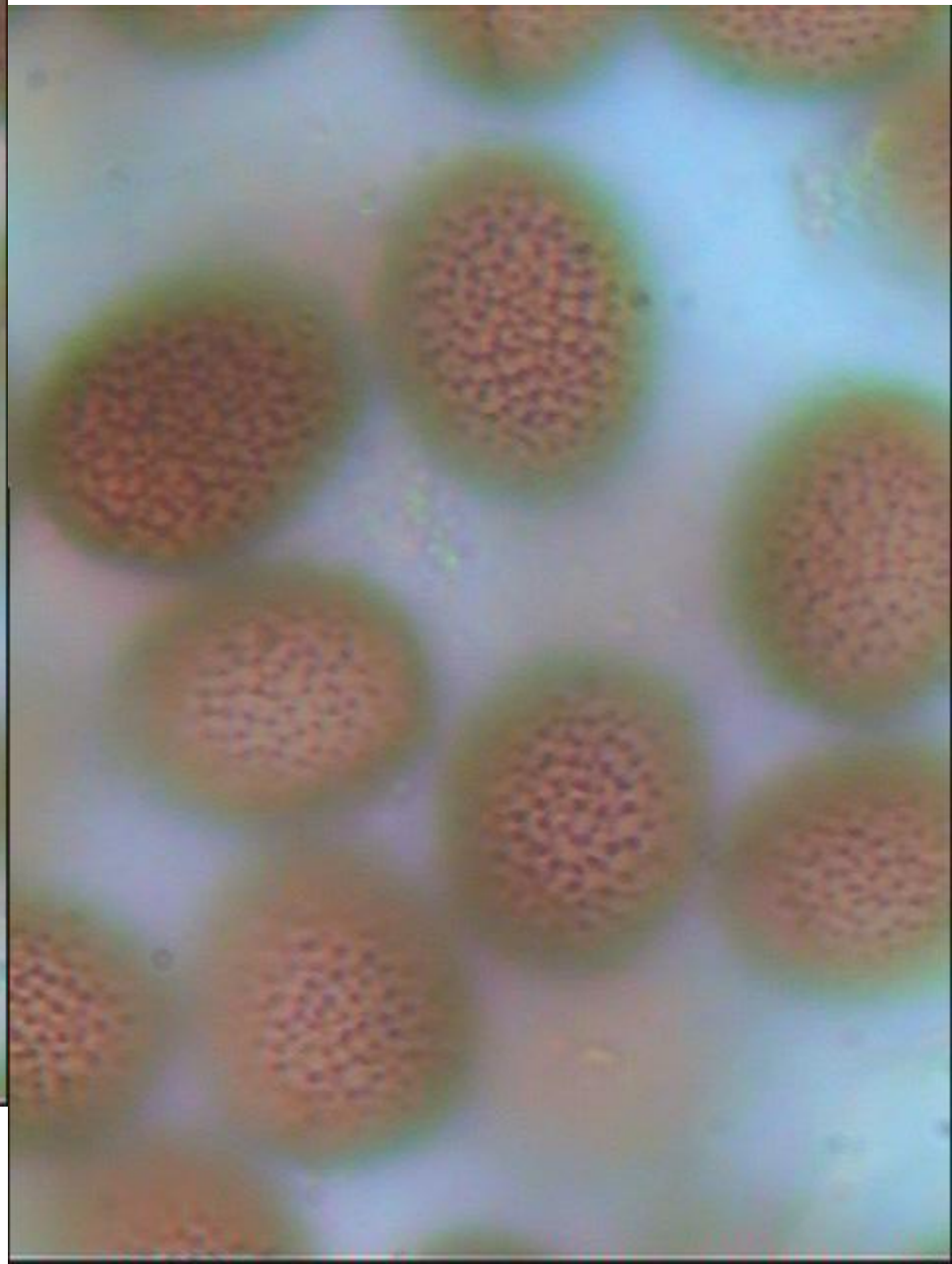
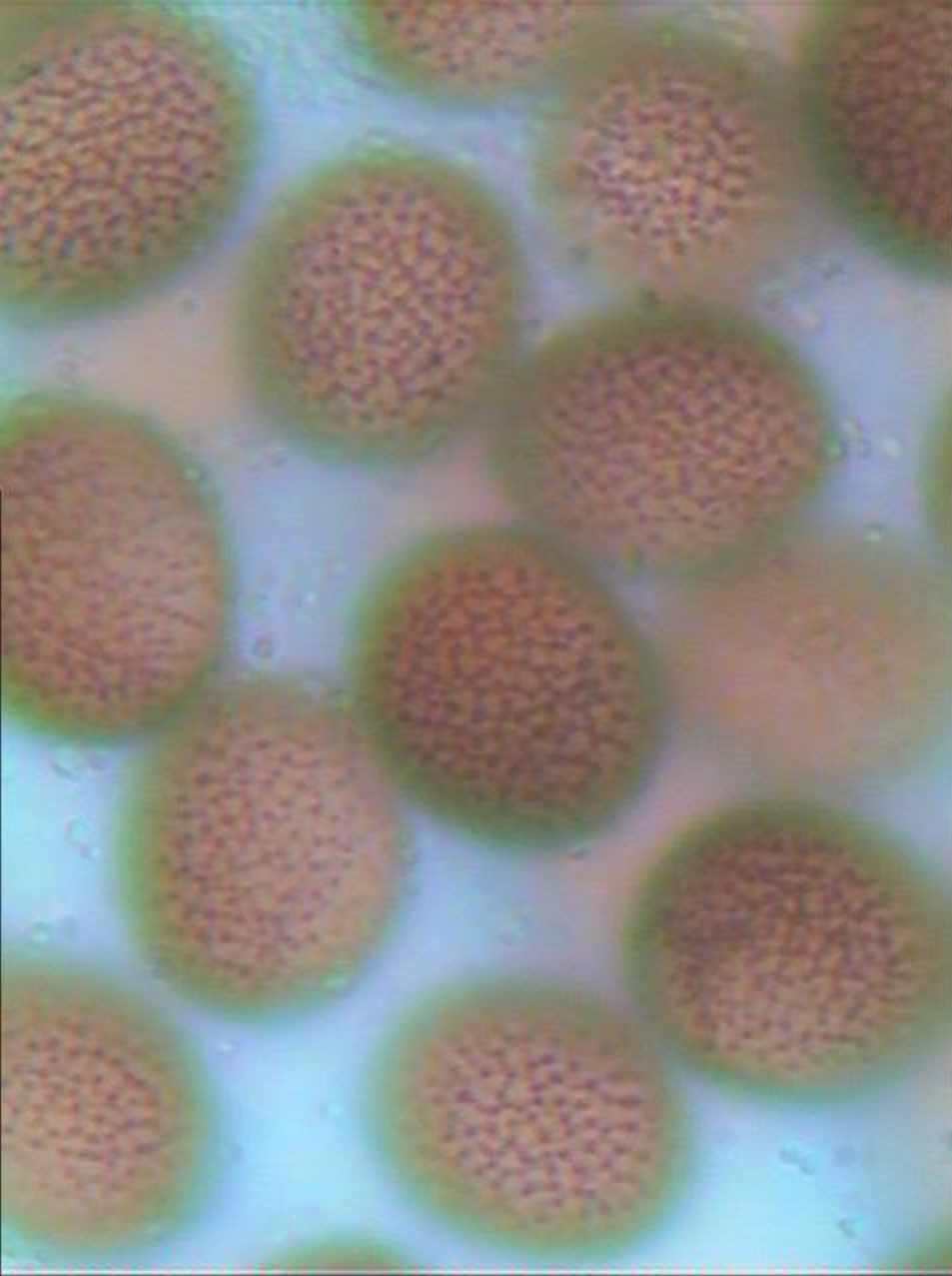


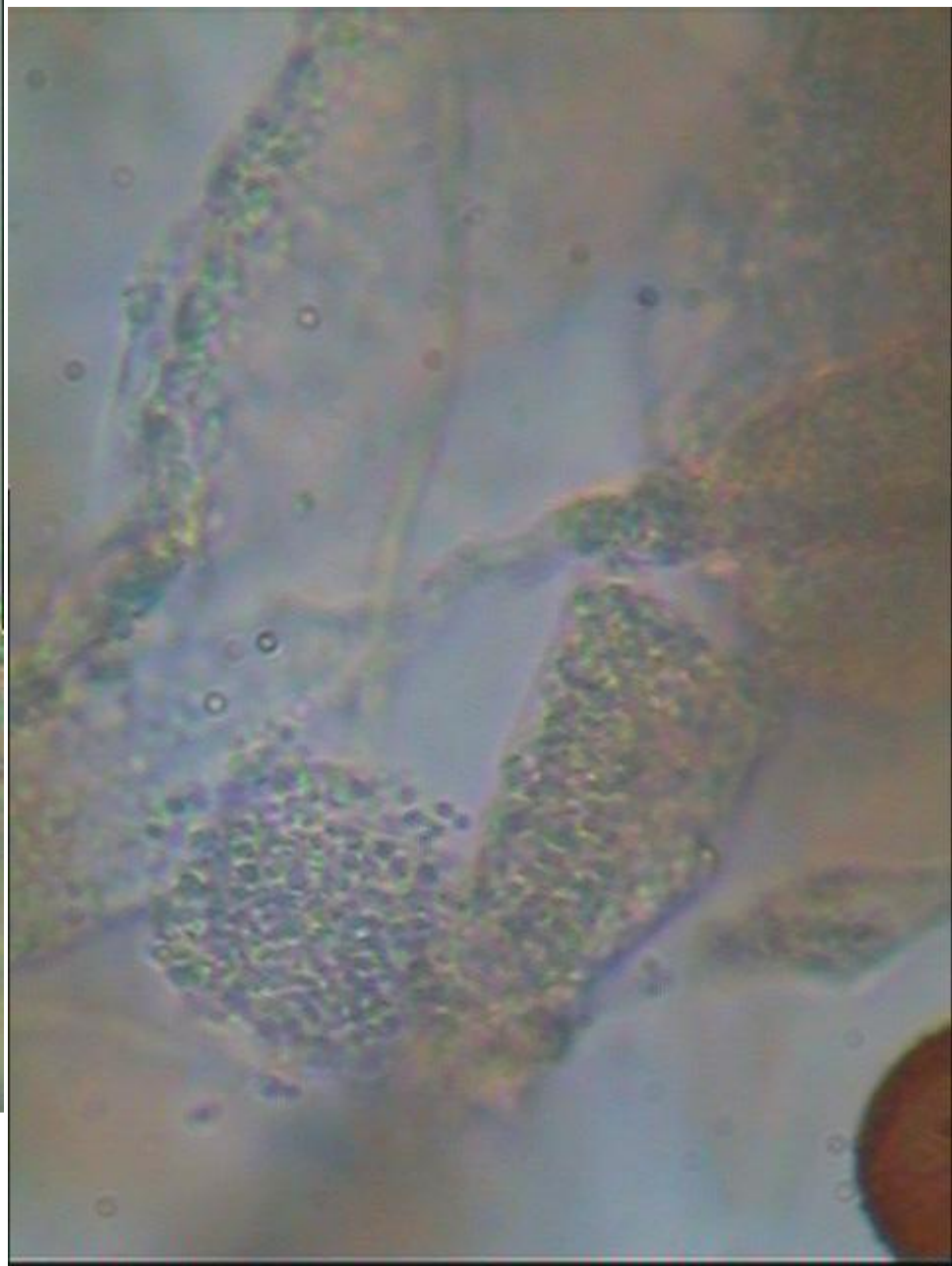


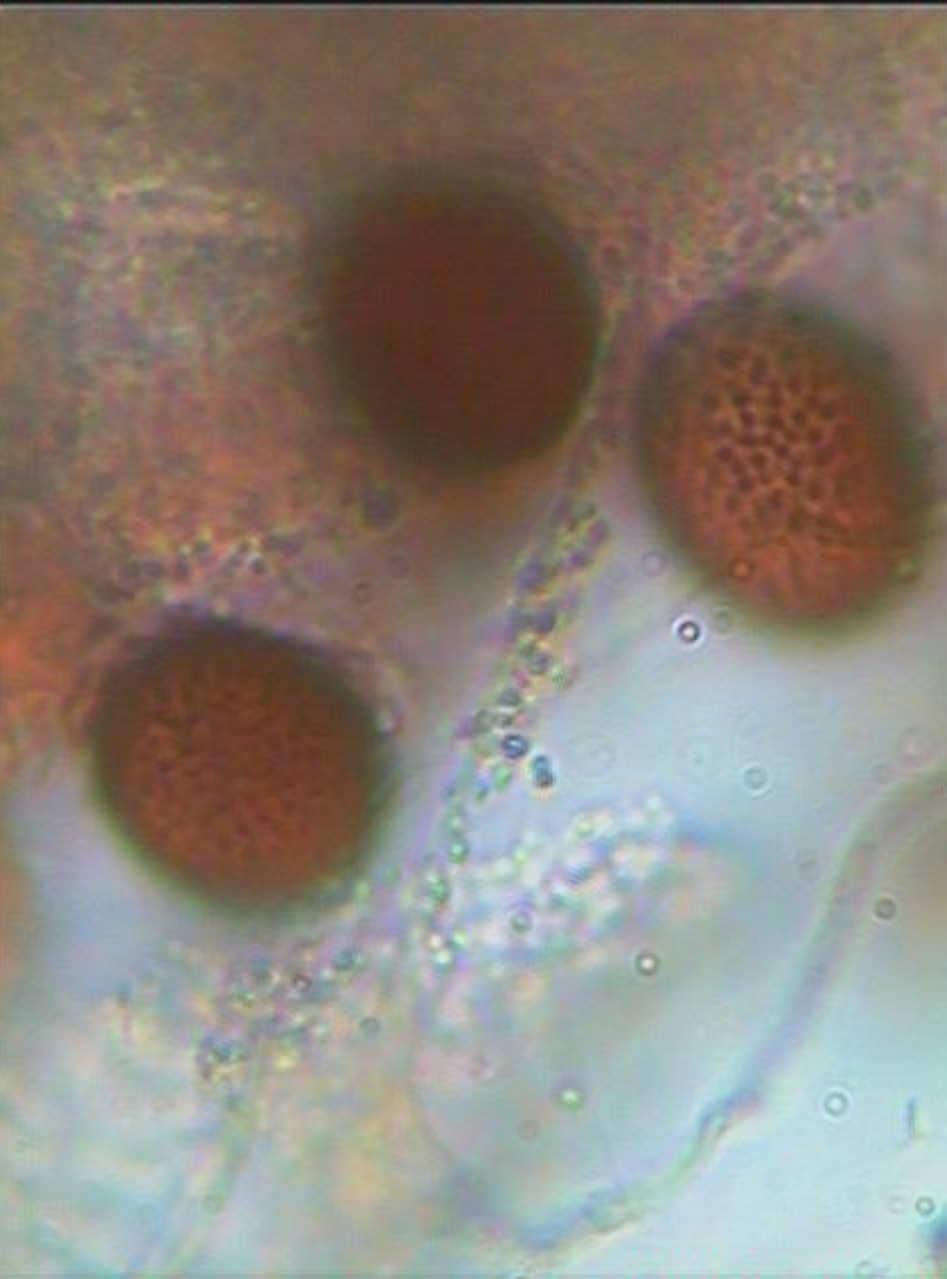


Spores : 14-15 x 11-12 μm









<i>F. cinerea</i>	<i>F. intermedia</i>	<i>F. septica var. candida</i>
+/- 1-6 (15) cm de long	+/- 0,3-3 (-6) cm de long	Plus grand
Spores en majorité ovales , qlq rondes. (10-) 14-14 (-15) μm , les verrues s'unissent souvent pour former de fines lignes réticulées	Spores globuleuses à subglobuleuses (9-) 10-12 (-13) μm	Spores globuleuses 6-9 μm
Feuilles mortes, débris végétaux, paille, aiguilles de pin	Bois mort, feuilles mortes ou herbes vivantes	Bois mort, tronc, écorce, sol nu

Les espèces du genre *Mucilago* ont le calcaire en cristaux et pas en granules