

Diderma ochraceum

Rognaix, piste centrale EDF N45,5791° E 06,4248° - 20/10/2008. Alt. 864m. Spores (8) 9-10 (11) μm . Herb. M. Meyer 37706



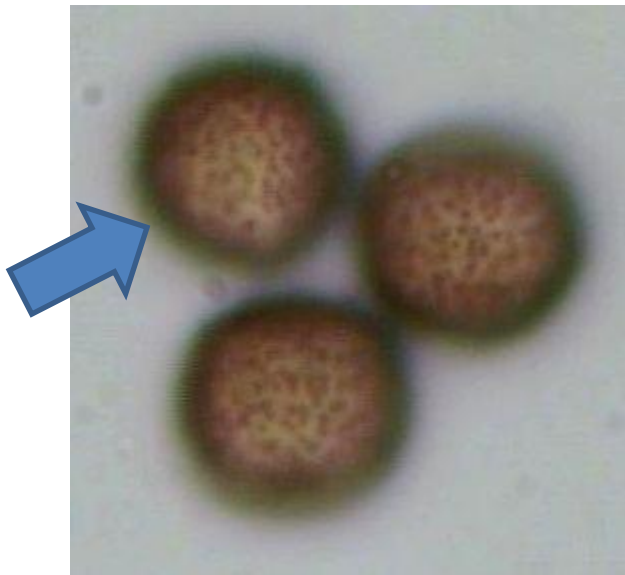
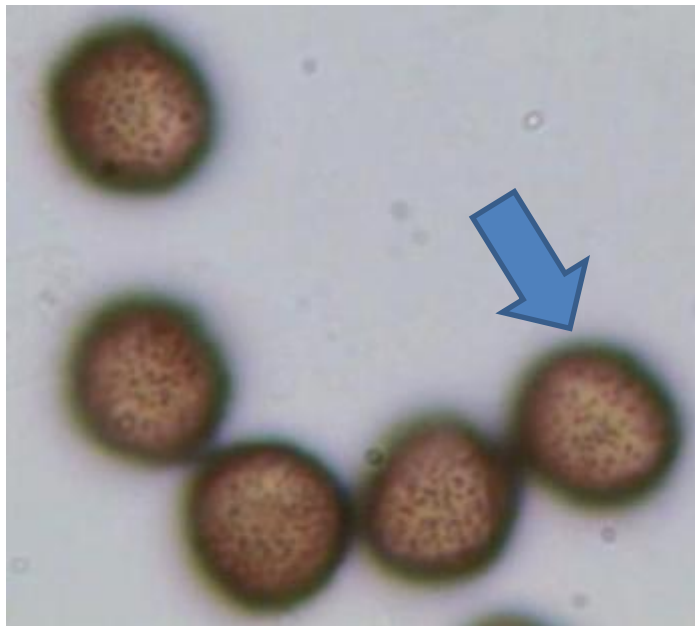


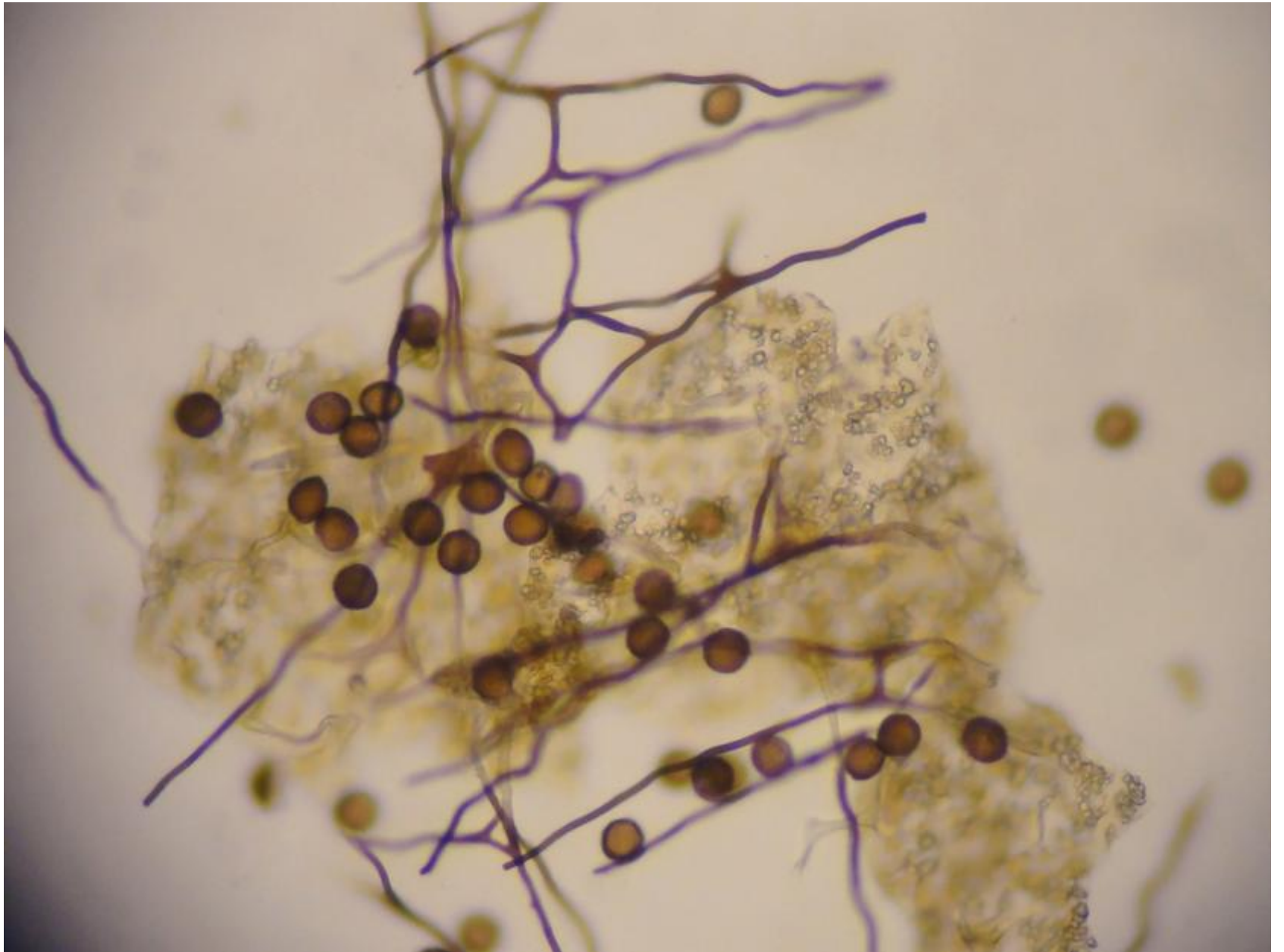


Péridium double

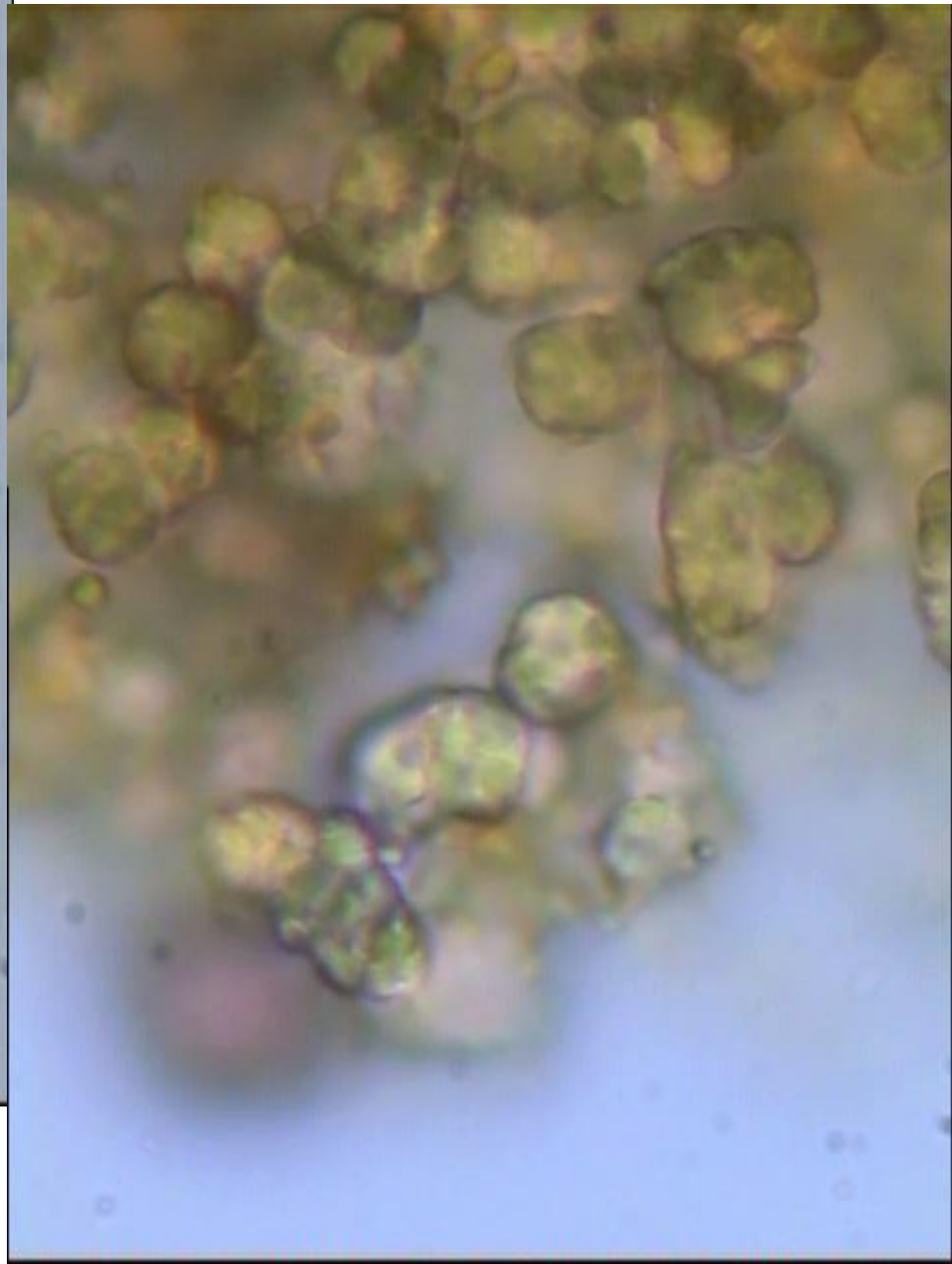
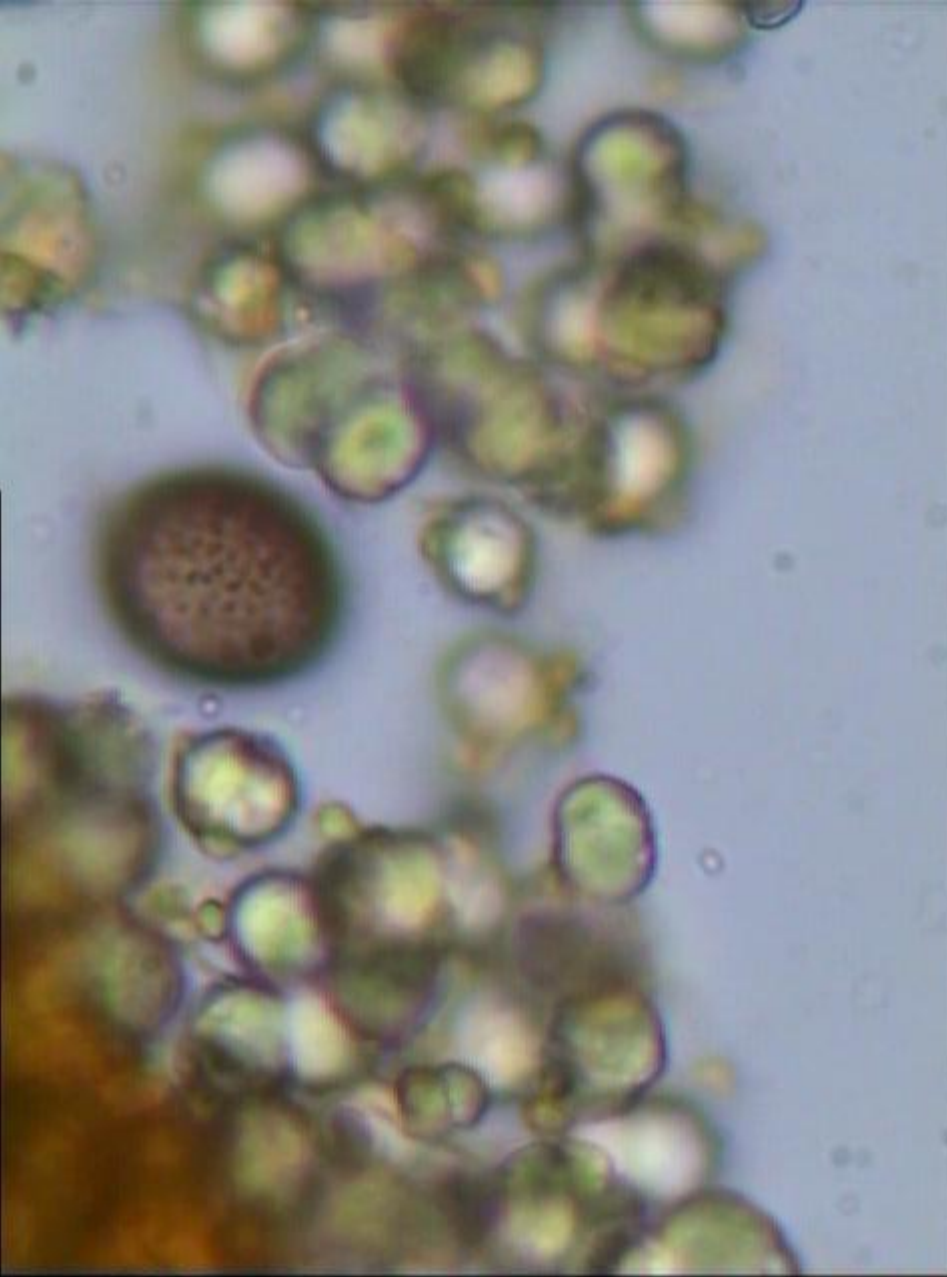
Columelle discrète

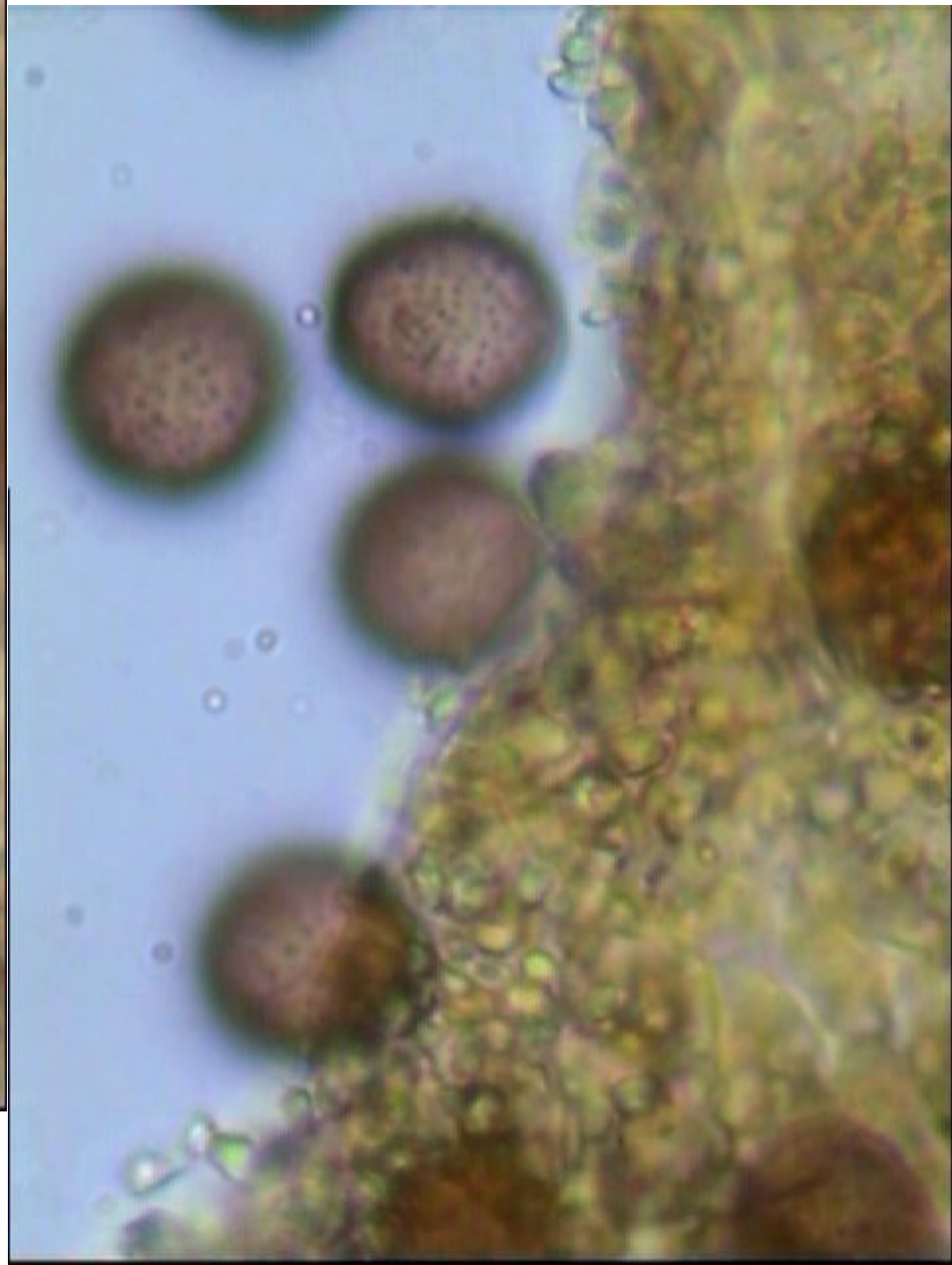
Spores (8) 9-10 (11) μm .





Péridium, couche externe

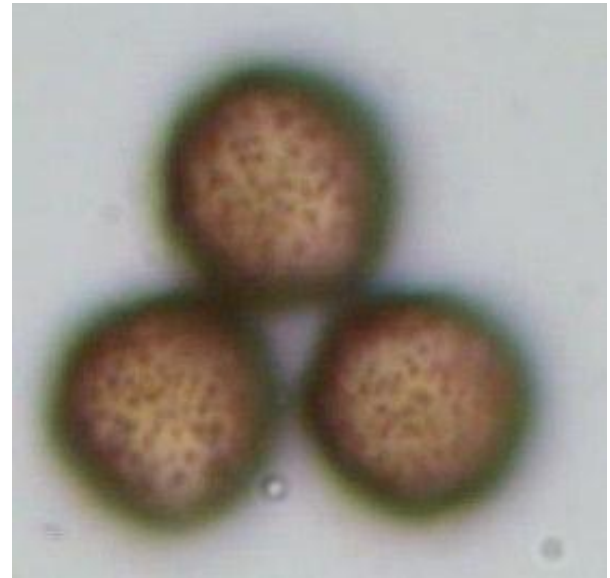
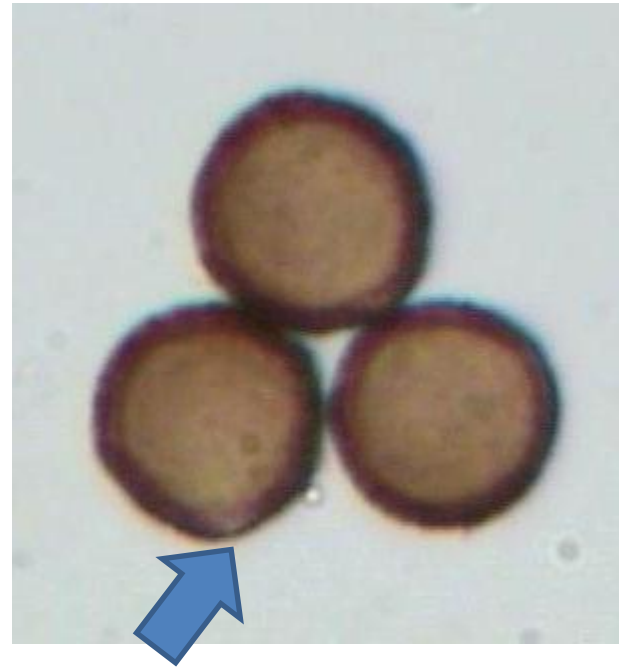


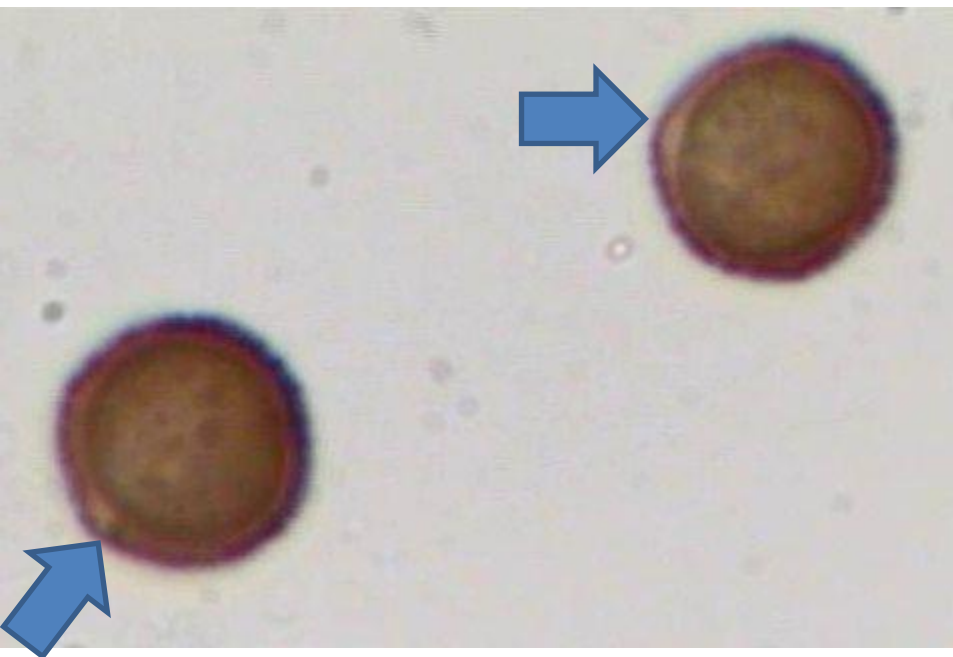


Péridium couche interne









Spores (8) 9-10 (11) μm .

