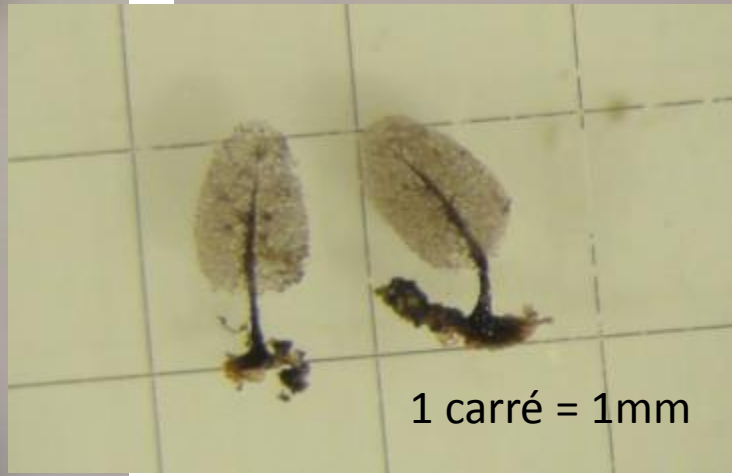
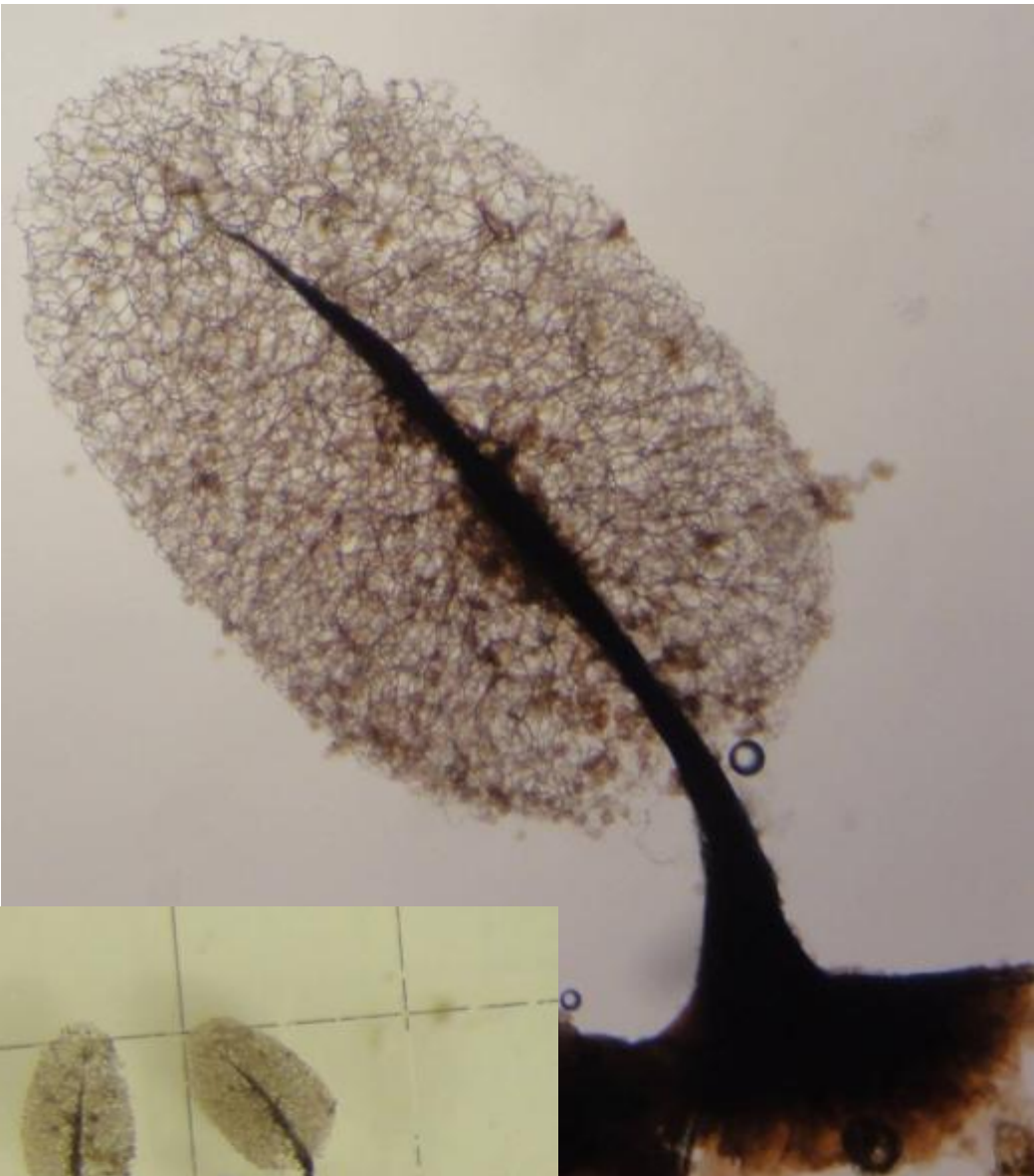
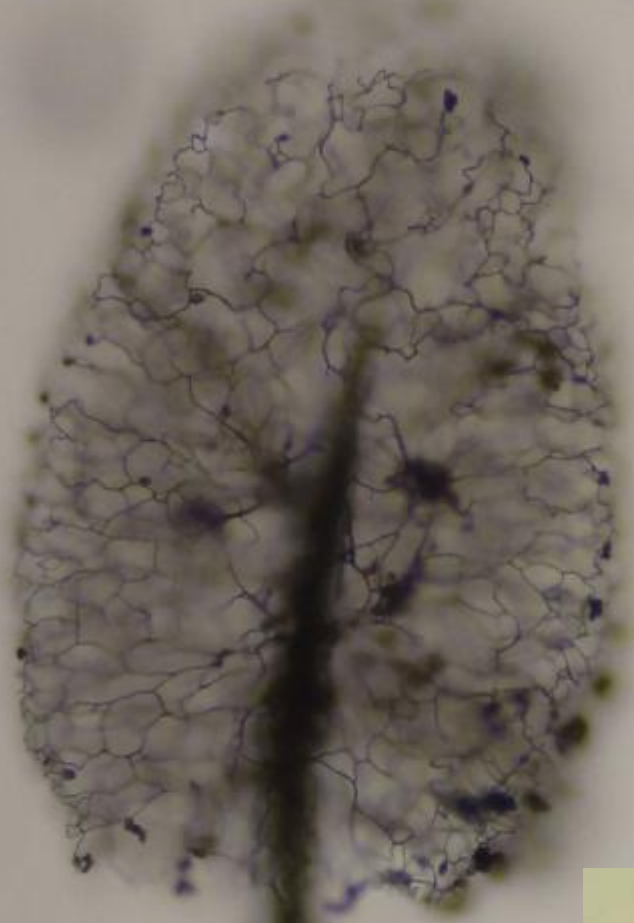


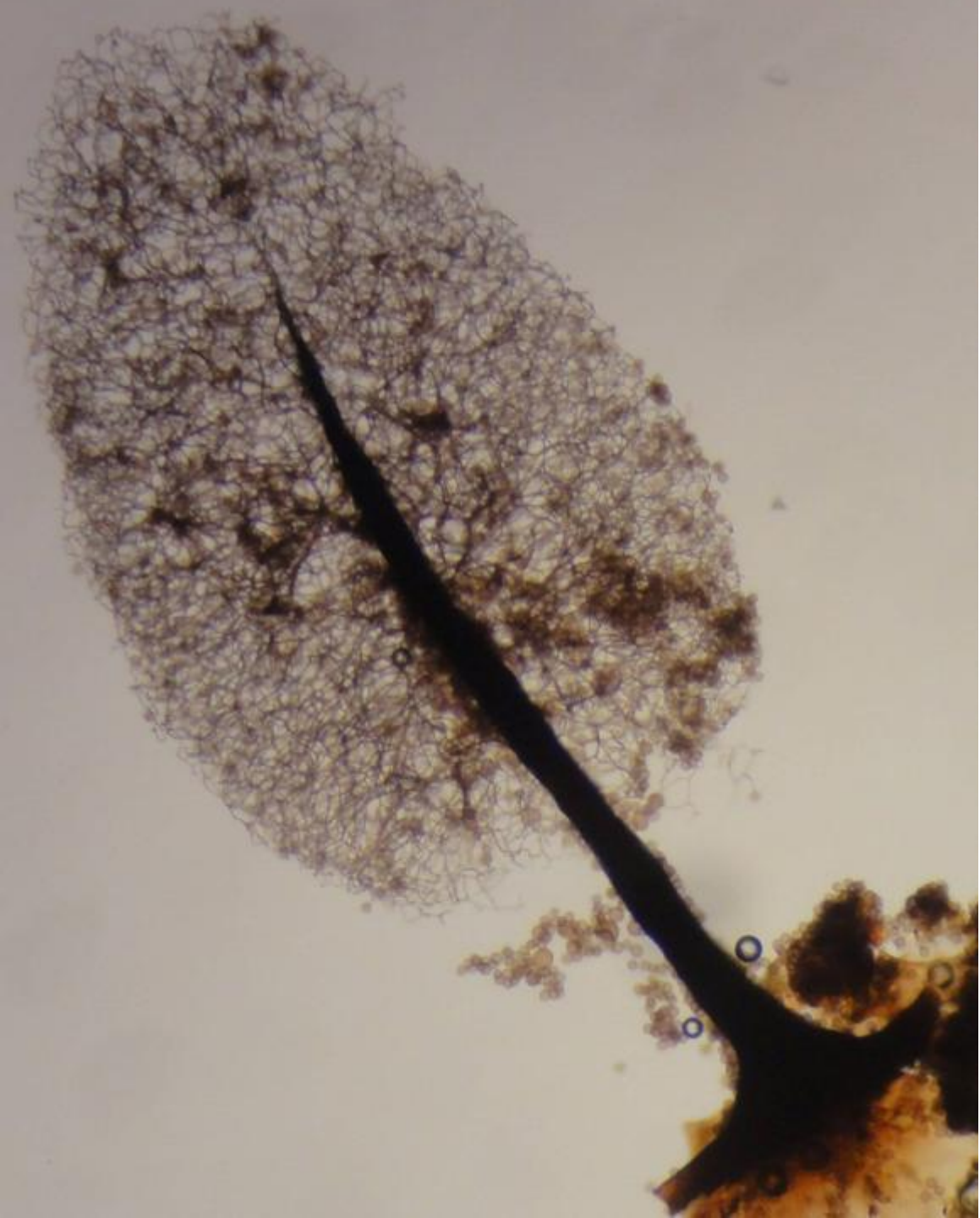
Comatricha pulchella

GTBW Herbar ML 562 - Sablière de et à Gentissart (Villers-la-Ville (BE)), le 13 mars 2011 – Tas de branches au sol (parking) - Google Maps +50.57321,4.56697 - *Comatricha laxa* a un capillitium fragile qui se détache facilement de la columelle et de nombreuses extrémités libres. *Comatricha puchelloides* a aussi de nombreuses extrémités libres (surtout en surface).

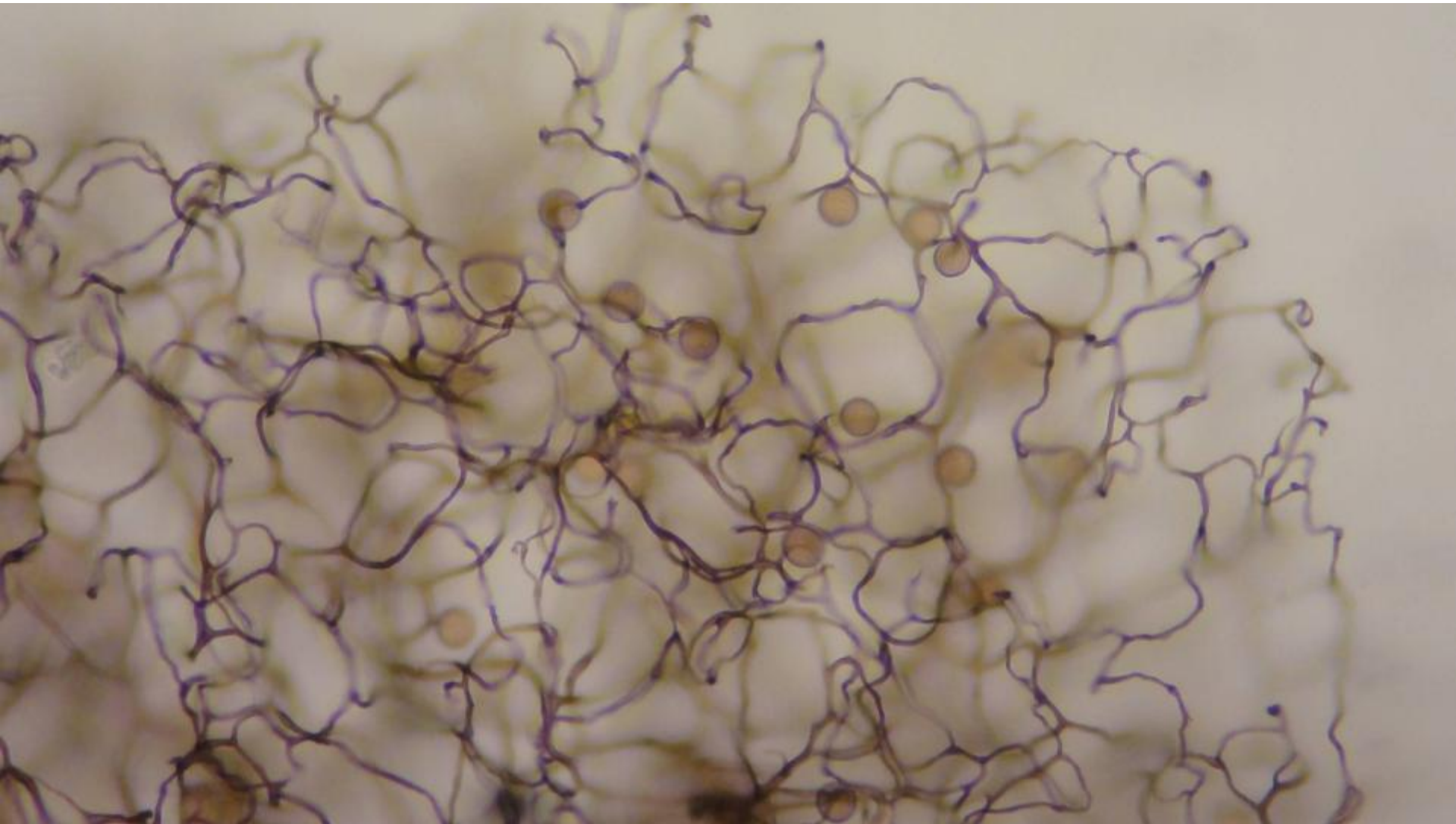


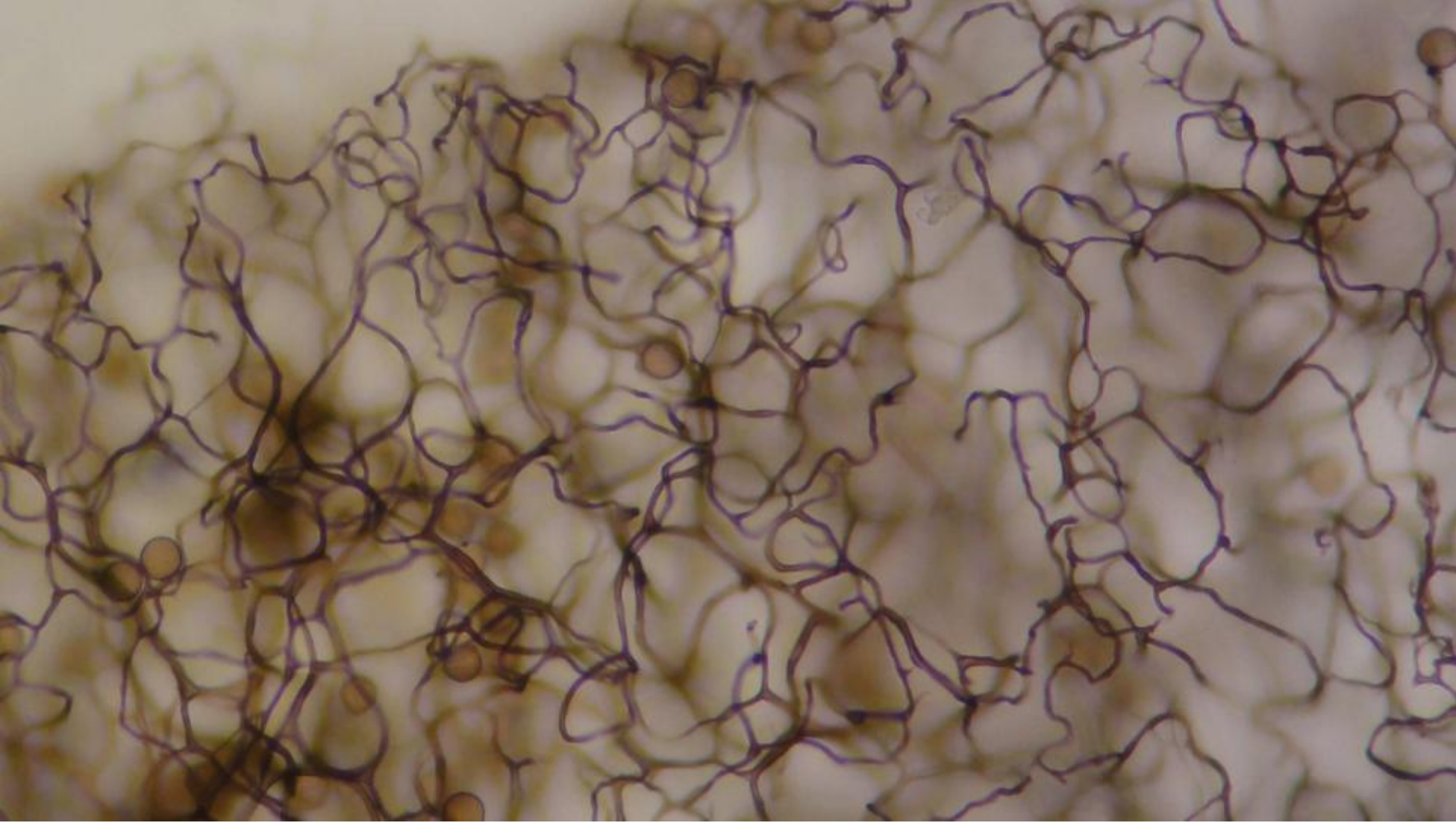


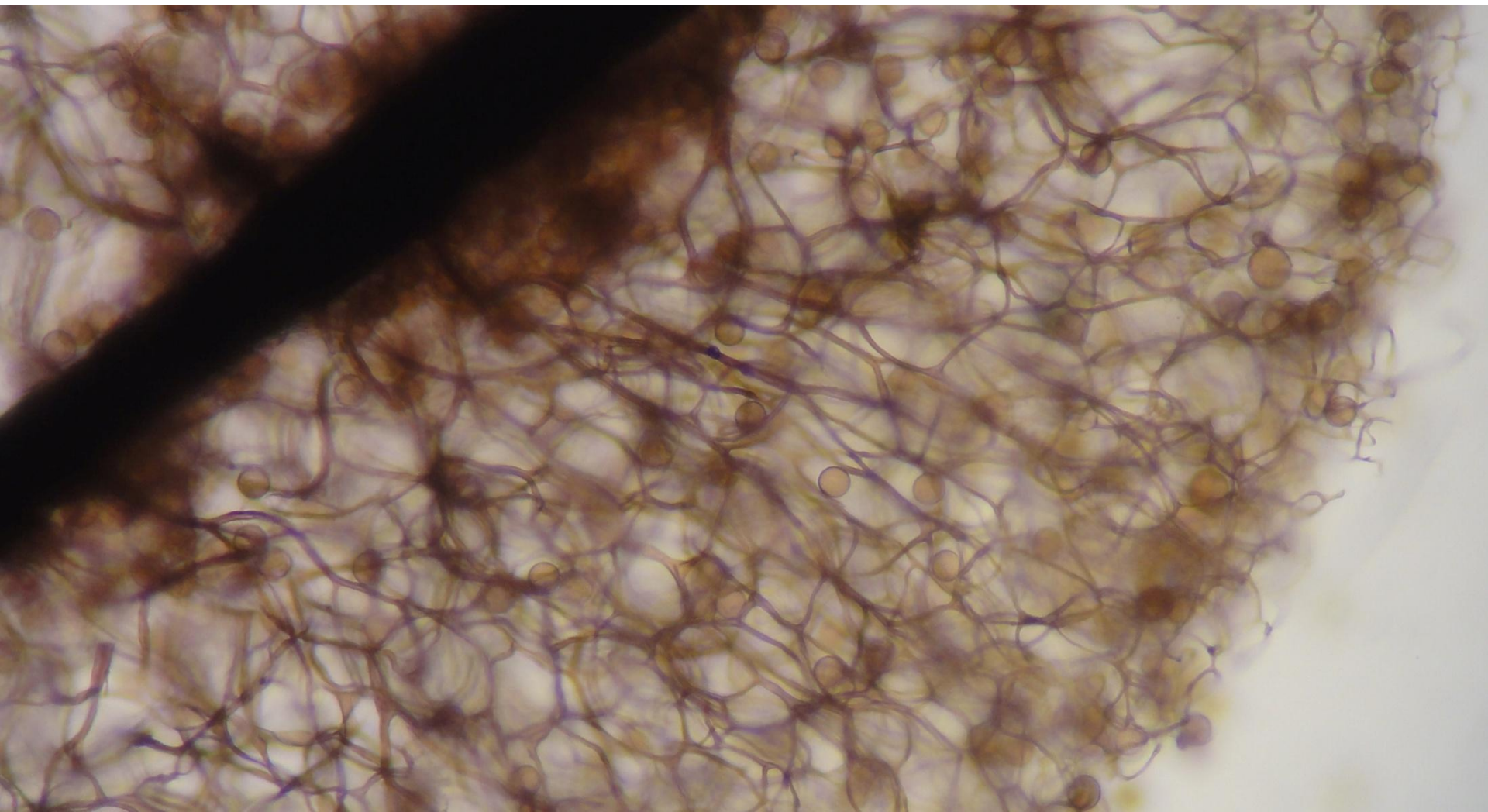
1 carré = 1mm

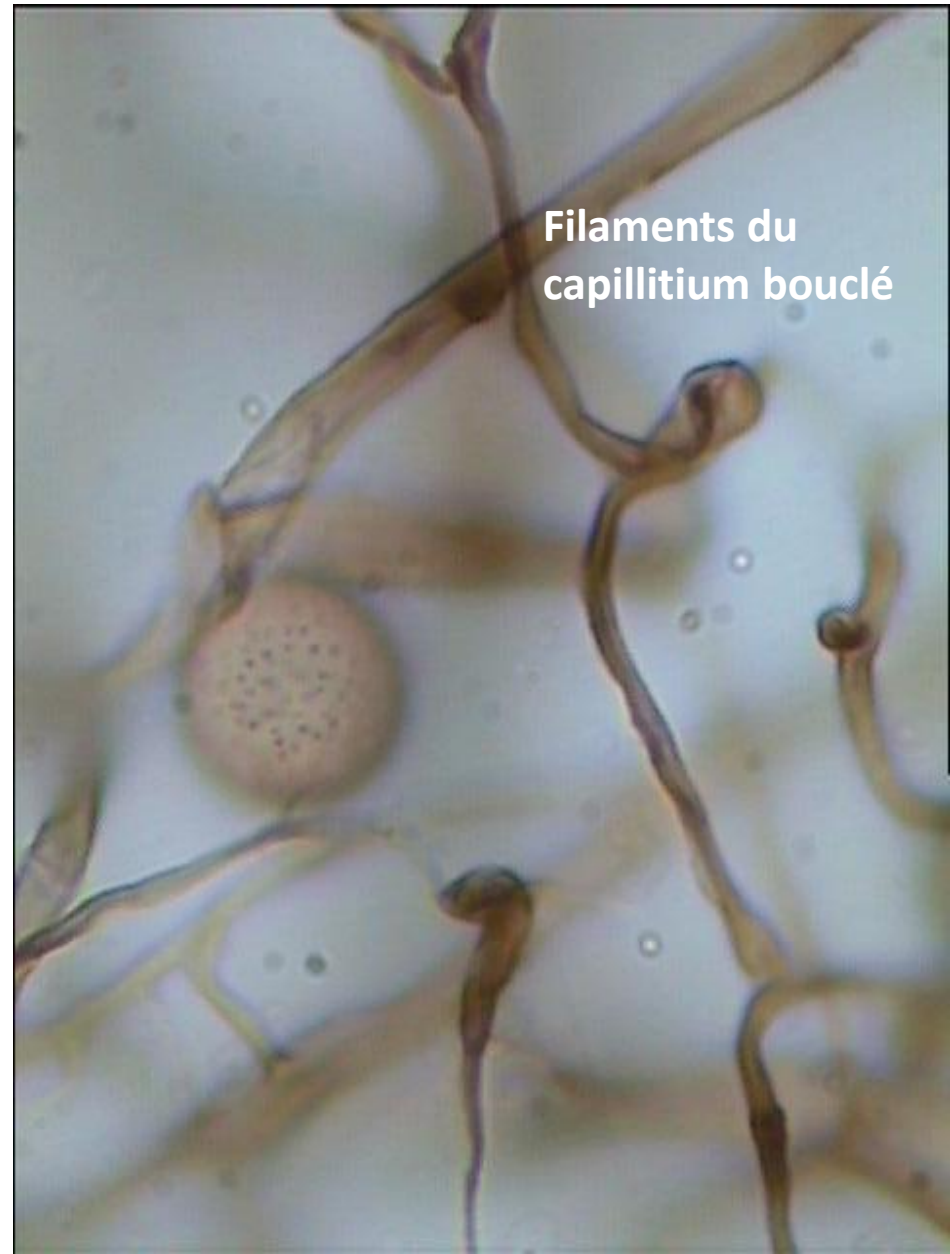


Capillitium flexueux, bouclé en surface sans d'extrémités libres









Filaments du
capillitium bouclé

Spores 9-10 μm



